



# **Enabler Release Definition for Condition Based URIs Selection**

Candidate Version 1.0 – 03 Feb 2009

---

**Open Mobile Alliance**  
OMA-ERELED-CBUS-V1\_0-20090203-C

Use of this document is subject to all of the terms and conditions of the Use Agreement located at <http://www.openmobilealliance.org/UseAgreement.html>.

Unless this document is clearly designated as an approved specification, this document is a work in process, is not an approved Open Mobile Alliance™ specification, and is subject to revision or removal without notice.

You may use this document or any part of the document for internal or educational purposes only, provided you do not modify, edit or take out of context the information in this document in any manner. Information contained in this document may be used, at your sole risk, for any purposes. You may not use this document in any other manner without the prior written permission of the Open Mobile Alliance. The Open Mobile Alliance authorizes you to copy this document, provided that you retain all copyright and other proprietary notices contained in the original materials on any copies of the materials and that you comply strictly with these terms. This copyright permission does not constitute an endorsement of the products or services. The Open Mobile Alliance assumes no responsibility for errors or omissions in this document.

Each Open Mobile Alliance member has agreed to use reasonable endeavors to inform the Open Mobile Alliance in a timely manner of Essential IPR as it becomes aware that the Essential IPR is related to the prepared or published specification. However, the members do not have an obligation to conduct IPR searches. The declared Essential IPR is publicly available to members and non-members of the Open Mobile Alliance and may be found on the “OMA IPR Declarations” list at <http://www.openmobilealliance.org/ipr.html>. The Open Mobile Alliance has not conducted an independent IPR review of this document and the information contained herein, and makes no representations or warranties regarding third party IPR, including without limitation patents, copyrights or trade secret rights. This document may contain inventions for which you must obtain licenses from third parties before making, using or selling the inventions. Defined terms above are set forth in the schedule to the Open Mobile Alliance Application Form.

NO REPRESENTATIONS OR WARRANTIES (WHETHER EXPRESS OR IMPLIED) ARE MADE BY THE OPEN MOBILE ALLIANCE OR ANY OPEN MOBILE ALLIANCE MEMBER OR ITS AFFILIATES REGARDING ANY OF THE IPR'S REPRESENTED ON THE “OMA IPR DECLARATIONS” LIST, INCLUDING, BUT NOT LIMITED TO THE ACCURACY, COMPLETENESS, VALIDITY OR RELEVANCE OF THE INFORMATION OR WHETHER OR NOT SUCH RIGHTS ARE ESSENTIAL OR NON-ESSENTIAL.

THE OPEN MOBILE ALLIANCE IS NOT LIABLE FOR AND HEREBY DISCLAIMS ANY DIRECT, INDIRECT, PUNITIVE, SPECIAL, INCIDENTAL, CONSEQUENTIAL, OR EXEMPLARY DAMAGES ARISING OUT OF OR IN CONNECTION WITH THE USE OF DOCUMENTS AND THE INFORMATION CONTAINED IN THE DOCUMENTS.

© 2009 Open Mobile Alliance Ltd. All Rights Reserved.

Used with the permission of the Open Mobile Alliance Ltd. under the terms set forth above.

# Contents

- 1. SCOPE .....4
- 2. REFERENCES .....5
  - 2.1 NORMATIVE REFERENCES .....5
  - 2.2 INFORMATIVE REFERENCES .....5
- 3. TERMINOLOGY AND CONVENTIONS .....6
  - 3.1 CONVENTIONS .....6
  - 3.2 DEFINITIONS .....6
  - 3.3 ABBREVIATIONS .....6
- 4. RELEASE VERSION OVERVIEW .....7
  - 4.1 VERSION 1.0 FUNCTIONALITY .....7
- 5. DOCUMENT LISTING FOR CBUS .....8
- 6. OMNA CONSIDERATIONS .....9
- 7. CONFORMANCE REQUIREMENTS NOTATION DETAILS .....10
- 8. ERDEF FOR CBUS - CLIENT REQUIREMENTS .....11
- 9. ERDEF FOR CBUS - SERVER REQUIREMENTS .....12
- APPENDIX A. CHANGE HISTORY (INFORMATIVE) .....13
  - A.1 APPROVED VERSION HISTORY .....13
  - A.2 DRAFT/CANDIDATE VERSION V 1.0 HISTORY .....13
- APPENDIX B. <ADDITIONAL INFORMATION> .....14
  - B.1 APP HEADER .....14
    - B.1.1 More Headers .....14
    - B.1.1.1 Even More Headers .....14

# Figures

- Figure 1: Example Figure .....14

# Tables

- Table 1: Listing of Documents in FOO Enabler .....8
- Table 2: ERDEF for CBUS Client-side Requirements .....11
- Table 3: ERDEF for CBUS Server-side Requirements .....12

# 1. Scope

The scope of this document is limited to the Enabler Release Definition of CBUS V1.0 enabler according to OMA Release process and the Enabler Release specification baseline listed in section 5.

## 2. References

### 2.1 Normative References

- [RFC2119] “Key words for use in RFCs to Indicate Requirement Levels”, S. Bradner, March 1997,  
[URL:http://www.ietf.org/rfc/rfc2119.txt](http://www.ietf.org/rfc/rfc2119.txt)
- [SCRRULES] “SCR Rules and Procedures”, Open Mobile Alliance™, OMA-ORG-SCR\_Rules\_and\_Procedures,  
[URL:http://www.openmobilealliance.org/](http://www.openmobilealliance.org/)

### 2.2 Informative References

- [OMADICT] “Dictionary for OMA Specifications”, Version x.y, Open Mobile Alliance™,  
OMA-ORG-Dictionary-Vx\_y,  
[URL:http://www.openmobilealliance.org/](http://www.openmobilealliance.org/)

## 3. Terminology and Conventions

### 3.1 Conventions

The key words “MUST”, “MUST NOT”, “REQUIRED”, “SHALL”, “SHALL NOT”, “SHOULD”, “SHOULD NOT”, “RECOMMENDED”, “MAY”, and “OPTIONAL” in this document are to be interpreted as described in [RFC2119].

All sections and appendixes, except “Scope”, "Release Version Overview" and “Conformance Requirements Notation Details”, are normative, unless they are explicitly indicated to be informative.

The formal notation convention used in sections 8 and 9 to formally express the structure and internal dependencies between specifications in the Enabler Release specification baseline is detailed in [SCRRULES].

### 3.2 Definitions

|  |   |
|--|---|
| <b>CBUS Client</b>                       | A functional entity that resides on the User Equipment, or an application server, that supports the CBUS enabler.   |
| <b>CBUS Server</b>                       | A functional entity that receives evaluation requests from multitude CBUS Clients and sends back corresponding evaluation results.  |
| <b>Group</b>                             | A Group is a predefined set of Users together with its policies and attributes. A Group is identified by a SIP URI.   |
| <b>Enabler Release</b>                   | Collection of specifications that combined together form an enabler for a service area, e.g. a download enabler, a browsing enabler, a messaging enabler, a location enabler, etc. The specifications that are forming an enabler should combined fulfil a number of related market requirements. |
| <b>Minimum Functionality Description</b> | Description of the guaranteed features and functionality that will be enabled by implementing the minimum mandatory part of the Enabler Release.  |
| <b>User Equipment</b>                    | A hardware device that supports a CBUS Client e.g., a wireless phone.   |

### 3.3 Abbreviations

|              |                                |
|--------------|--------------------------------|
| <b>CBUS</b>  | Condition Based URIs Selection |
| <b>ERDEF</b> | Enabler Requirement Definition |
| <b>ERELD</b> | Enabler Release Definition     |
| <b>OMA</b>   | Open Mobile Alliance           |
| <b>OMNA</b>  | Open Mobile Naming Authority   |
| <b>URI</b>   | Uniform Resource Identifier    |

## **4. Release Version Overview**

### **4.1 Version 1.0 Functionality**

## 5. Document Listing for CBUS

| This section is normative.Doc Ref | Permanent Document Reference | Description                           |
|-----------------------------------|------------------------------|---------------------------------------|
| <b>Requirement Document</b>       |                              |                                       |
| [CBUS_RD]                         | OMA-RD-CBUS-V1_0-20090203-C  | Requirement Document for CBUS Enabler |

**Table 1: Listing of Documents in FOO Enabler**



## 6. OMNA Considerations

## 7. Conformance Requirements Notation Details

This section is informative

The tables in following chapters use the following notation:

- Item:** Entry in this column **MUST** be a valid `ScrItem` according to [SCRRULES].
- Feature/Application:** Entry in this column **SHOULD** be a short descriptive label to the **Item** in question.
- Requirement:** Expression in the column **MUST** be a valid `TerminalExpression` according to [SCRRULES] and it **MUST** accurately reflect the architectural requirement of the **Item** in question.

## 8. ERDEF for CBUS - Client Requirements

This section is normative.

| Item                                | Feature / Application | Requirement |
|-------------------------------------|-----------------------|-------------|
| OMA-ERDEF-<<ENABLER>>-C-001-<<M/O>> | <<ENABLER>> Client    |             |

Table 2: ERDEF for CBUS Client-side Requirements

## 9. ERDEF for CBUS - Server Requirements

This section is normative.

| Item                                | Feature / Application | Requirement |
|-------------------------------------|-----------------------|-------------|
| OMA-ERDEF-<<ENABLER>>-S-001-<<M/O>> | <<ENABLER>> Server    |             |

**Table 3: ERDEF for CBUS Server-side Requirements**

## Appendix A. Change History (Informative)

### A.1 Approved Version History

| Reference | Date | Description      |
|-----------|------|------------------|
| n/a       | n/a  | No prior version |

### A.2 Draft/Candidate Version V 1.0 History

| Document Identifier                       | Date        | Sections                 | Description  |
|---|-------------|--------------------------|--|
| Draft Versions<br>OMA-ERELED-CBUS-V1_0    | 22 Oct 2008 | 3.2, 8.2,<br>11.4, App A | No prior version<br>Incorporates input to committee:<br>OMA-PAG-CBUS-2008-0043R01                          |
|   | 25 Oct 2008 | 5                        | Changes to<br>OMA-RD-CBUS-V1_0<br>Section 5 of the ERELD updated to reflect this                           |
|   | 07 Jan 2009 | 5                        | Changes to<br>OMA-RD-CBUS-V1_0<br>Section 5 of the ERELD updated to reflect this                           |
|   | 15 Jan 2009 | 5                        | Changes to<br>OMA-RD-CBUS-V1_0<br>Section 5 of the ERELD updated to reflect this                           |
| Candidate Version<br>OMA-ERELED-CBUS-V1_0 | 03 Feb 2009 | N/A                      | Status changed to Candidate by TP<br>TP ref # OMA-TP-2009-0022-<br>INP_CBUS_V1_0_RD_for_Candidate_Approval |

## Appendix B. <Additional Information>

### B.1 App Header

<More text>

#### B.1.1 More Headers

<More text>

##### B.1.1.1 Even More Headers

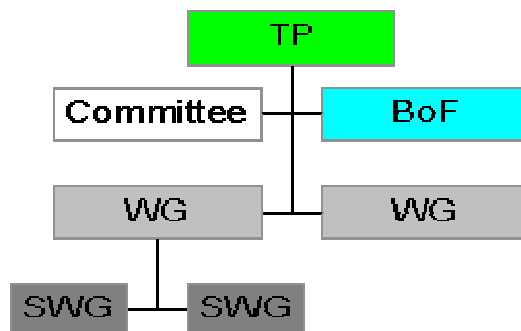


Figure 1: Example Figure