



Enabler Test Specification for Device Profile Evolution

Candidate Version 1.0 – 29 Jun 2010

Open Mobile Alliance
OMA-ETS-DPE-V1_0-20100629-C

Use of this document is subject to all of the terms and conditions of the Use Agreement located at <http://www.openmobilealliance.org/UseAgreement.html>.

Unless this document is clearly designated as an approved specification, this document is a work in process, is not an approved Open Mobile Alliance™ specification, and is subject to revision or removal without notice.

You may use this document or any part of the document for internal or educational purposes only, provided you do not modify, edit or take out of context the information in this document in any manner. Information contained in this document may be used, at your sole risk, for any purposes. You may not use this document in any other manner without the prior written permission of the Open Mobile Alliance. The Open Mobile Alliance authorizes you to copy this document, provided that you retain all copyright and other proprietary notices contained in the original materials on any copies of the materials and that you comply strictly with these terms. This copyright permission does not constitute an endorsement of the products or services. The Open Mobile Alliance assumes no responsibility for errors or omissions in this document.

Each Open Mobile Alliance member has agreed to use reasonable endeavors to inform the Open Mobile Alliance in a timely manner of Essential IPR as it becomes aware that the Essential IPR is related to the prepared or published specification. However, the members do not have an obligation to conduct IPR searches. The declared Essential IPR is publicly available to members and non-members of the Open Mobile Alliance and may be found on the “OMA IPR Declarations” list at <http://www.openmobilealliance.org/ipr.html>. The Open Mobile Alliance has not conducted an independent IPR review of this document and the information contained herein, and makes no representations or warranties regarding third party IPR, including without limitation patents, copyrights or trade secret rights. This document may contain inventions for which you must obtain licenses from third parties before making, using or selling the inventions. Defined terms above are set forth in the schedule to the Open Mobile Alliance Application Form.

NO REPRESENTATIONS OR WARRANTIES (WHETHER EXPRESS OR IMPLIED) ARE MADE BY THE OPEN MOBILE ALLIANCE OR ANY OPEN MOBILE ALLIANCE MEMBER OR ITS AFFILIATES REGARDING ANY OF THE IPR'S REPRESENTED ON THE “OMA IPR DECLARATIONS” LIST, INCLUDING, BUT NOT LIMITED TO THE ACCURACY, COMPLETENESS, VALIDITY OR RELEVANCE OF THE INFORMATION OR WHETHER OR NOT SUCH RIGHTS ARE ESSENTIAL OR NON-ESSENTIAL.

THE OPEN MOBILE ALLIANCE IS NOT LIABLE FOR AND HEREBY DISCLAIMS ANY DIRECT, INDIRECT, PUNITIVE, SPECIAL, INCIDENTAL, CONSEQUENTIAL, OR EXEMPLARY DAMAGES ARISING OUT OF OR IN CONNECTION WITH THE USE OF DOCUMENTS AND THE INFORMATION CONTAINED IN THE DOCUMENTS.

© 2010 Open Mobile Alliance Ltd. All Rights Reserved.

Used with the permission of the Open Mobile Alliance Ltd. under the terms set forth above.

Contents

1. SCOPE	6
2. REFERENCES	7
2.1 NORMATIVE REFERENCES	7
2.2 INFORMATIVE REFERENCES	7
3. TERMINOLOGY AND CONVENTIONS	8
3.1 CONVENTIONS	8
3.2 DEFINITIONS	8
3.3 ABBREVIATIONS	8
4. INTRODUCTION	10
4.1 TEST INFRASTRUCTURE REQUIREMENTS	10
4.2 ENABLER EXECUTION FLOW	11
4.2.1 Use Case: User has installed a memory card	11
4.2.2 Use Case: Photo Blog	11
4.2.3 Use Case: Photo Blog	12
5. DPE CONFORMANCE TEST CASES	14
6. DPE INTEROPERABILITY TEST CASES	15
6.1 DPE-1.0-INT-001 DPE-1 CLIENT INITIATED REGISTRATION	15
6.2 DPE-1.0-INT-002 DPE-1 SERVER INITIATED REGISTRATION	15
6.3 DPE-1.0-INT-010 DPE-2 PROPERTY QUERY	16
6.4 DPE-1.0-INT-011 DPE-2 PROPERTY POLICY SET AND REPORT	17
6.5 DPE-1.0-INT-012 DPE-2 PROPERTY POLICY RELEASE	18
6.6 DPE-1.0-INT-020 DPE-2 GROUP SET AND QUERY	19
6.7 DPE-1.0-INT-021 DPE-2 GROUP RELEASE	20
6.8 DPE-1.0-INT-022 DPE-2 GROUP POLICY SET AND REPORT	21
6.9 DPE-1.0-INT-023 DPE-2 GROUP POLICY RELEASE	22
6.10 DPE-1.0-INT-030 DPE-2 ANY-CHANGE POLICY	23
6.11 DPE-1.0-INT-031 DPE-2 EXACT-MATCH POLICY	24
6.12 DPE-1.0-INT-032 DPE-2 LIST-MATCH POLICY	24
6.13 DPE-1.0-INT-033 DPE-2 IN-RANGE POLICY	25
6.14 DPE-1.0-INT-034 DPE-2 OUT-OF-RANGE POLICY	26
6.15 DPE-1.0-INT-035 DPE-2 PROPERTY-SUPPORT POLICY	27
6.16 DPE-1.0-INT-036 DPE-2 SCHEDULE POLICY	27
6.17 DPE-1.0-INT-040 DPE-3 PROPERTY QUERY	28
6.18 DPE-1.0-INT-041 DPE-3 PROPERTY POLICY SET AND REPORT	29
6.19 DPE-1.0-INT-042 DPE-3 PROPERTY POLICY RELEASE	30
6.20 DPE-1.0-INT-050 DPE-3 GROUP SET AND QUERY	31
6.21 DPE-1.0-INT-051 DPE-3 GROUP RELEASE	32
6.22 DPE-1.0-INT-052 DPE-3 GROUP POLICY SET AND REPORT	33
6.23 DPE-1.0-INT-053 DPE-3 GROUP POLICY RELEASE	33
6.24 DPE-1.0-INT-060 DPE-3 ANY-CHANGE POLICY	34
6.25 DPE-1.0-INT-061 DPE-3 EXACT-MATCH POLICY	35
6.26 DPE-1.0-INT-062 DPE-3 LIST-MATCH POLICY	36
6.27 DPE-1.0-INT-063 DPE-3 IN-RANGE POLICY	37
6.28 DPE-1.0-INT-064 DPE-3 OUT-OF-RANGE POLICY	38
6.29 DPE-1.0-INT-065 DPE-3 PROPERTY-SUPPORT POLICY	38
6.30 DPE-1.0-INT-066 DPE-3 SCHEDULE POLICY	39
6.31 DPE-1.0-INT-070 DPE-3 CLIENT ID QUERY	40
6.32 DPE-1.0-INT-071 DPE-3 CLIENT ID REPORT	41
6.33 DPE-1.0-INT-080 DPE-1 COMMANDS IN HTTP RESPONSES	42
6.34 DPE-1.0-INT-081 DPE-2 COMMANDS IN HTTP RESPONSES	43
APPENDIX A. CHANGE HISTORY (INFORMATIVE)	45

A.1	APPROVED VERSION HISTORY.....	45
A.2	DRAFT/CANDIDATE VERSION 1.0 HISTORY.....	45

Figures

Figure 1:	DPE Test environment	10
Figure 2:	Use Case: User has installed a memory card.....	11
Figure 3:	Use Case: Photo Blog.....	12
Figure 4:	Use Case: Photo Blog.....	13

Tables

Table 1:	DPE-1.0-int-001 DPE-1 Client Initiated Registration.....	15
Table 2:	DPE-1.0-int-002 DPE-1 Server Initiated Registration	16
Table 3:	DPE-1.0-int-010 DPE-2 Property Query	17
Table 4:	DPE-1.0-int-011 DPE-2 Property Policy Set and Report.....	18
Table 5:	DPE-1.0-int-012 DPE-2 Property Policy Release	19
Table 6:	DPE-1.0-int-020 DPE-2 Group Set and Query	20
Table 7:	DPE-1.0-int-021 DPE-2 Group Release.....	21
Table 8:	DPE-1.0-int-022 DPE-2 Group Policy Set and Report.....	22
Table 9:	DPE-1.0-int-023 DPE-2 Group Policy Release	23
Table 10:	DPE-1.0-int-030 DPE-2 Any-Change Policy	23
Table 11:	DPE-1.0-int-031 DPE-2 Exact-Match Policy	24
Table 12:	DPE-1.0-int-032 DPE-2 List-Match Policy.....	25
Table 13:	DPE-1.0-int-033 DPE-2 In-Range Policy.....	26
Table 14:	DPE-1.0-int-034 DPE-2 Out-Of-Range Policy	26
Table 15:	DPE-1.0-int-035 DPE-2 Property-Support Policy	27
Table 16:	DPE-1.0-int-036 DPE-2 Schedule Policy	28
Table 17:	DPE-1.0-int-040 DPE-3 Property Query	29
Table 18:	DPE-1.0-int-041 DPE-3 Property Policy Set and Report.....	30
Table 19:	DPE-1.0-int-042 DPE-3 Property Policy Release	31
Table 20:	DPE-1.0-int-050 DPE-3 Group Set and Query	32
Table 21:	DPE-1.0-int-051 DPE-3 Group Release.....	33
Table 22:	DPE-1.0-int-052 DPE-3 Group Policy Set and Report.....	33
Table 23:	DPE-1.0-int-053 DPE-3 Group Policy Release	34

Table 24: DPE-1.0-int-060 DPE-3 Any-Change Policy	35
Table 25: DPE-1.0-int-061 DPE-3 Exact-Match Policy	36
Table 26: DPE-1.0-int-062 DPE-3 List-Match Policy.....	37
Table 27: DPE-1.0-int-063 DPE-3 In-Range Policy.....	37
Table 28: DPE-1.0-int-064 DPE-3 Out-Of-Range Policy	38
Table 29: DPE-1.0-int-065 DPE-3 Property-Support Policy	39
Table 30: DPE-1.0-int-066 DPE-3 Schedule Policy	40
Table 31: DPE-1.0-int-070 DPE-3 Client ID Query	41
Table 32: DPE-1.0-int-071 DPE-3 Client ID Report.....	42
Table 33: DPE-1.0-int-080 DPE-1 commands in HTTP responses	43
Table 34: DPE-1.0-int-081 DPE-2 commands in HTTP responses	44

1. Scope

This document describes in detail available test cases for DPE 1.0.

Only interoperability test cases are contained in this specification. The interoperability test cases are aimed to verify that implementations of the specifications properly handled the interface functions they expose and use.

2. References

2.1 Normative References

- [IOPPROC] “OMA Interoperability Policy and Process”, Version 1.7, Open Mobile Alliance™, OMA-ORG-IOP_Process-V1_7, [URL:http://www.openmobilealliance.org/](http://www.openmobilealliance.org/)
- [RFC2119] “Key words for use in RFCs to Indicate Requirement Levels”, S. Bradner, March 1997, [URL:http://www.ietf.org/rfc/rfc2119.txt](http://www.ietf.org/rfc/rfc2119.txt)
- [DPE-RD] “Device Profile Requirements”, Open Mobile Alliance™, OMA-RD-DPE-V1_0, [URL:http://www.openmobilealliance.org/](http://www.openmobilealliance.org/)
- [DPE-AD] “Device Profile Evolution Architecture”, Open Mobile Alliance™, OMA-AD-DPE-V1_0, [URL:http://www.openmobilealliance.org/](http://www.openmobilealliance.org/)
- [DPE-MO] “OMA DPE Management Object”, Open Mobile Alliance™, OMA-TS-DPE_MO -V1_0, [URL:http://www.openmobilealliance.org/](http://www.openmobilealliance.org/)
- [DPE-TS] “Device Profile Evolution Technical Specification”, Open Mobile Alliance™, OMA-TS-DPE-V1_0, [URL:http://www.openmobilealliance.org/](http://www.openmobilealliance.org/)
- [PUSH-OTA] "Push OTA Protocol Specification". Open Mobile Alliance™. OMA-WAP-TS-PushOTA. [URL:http://www.openmobilealliance.org/](http://www.openmobilealliance.org/)
- [PUSH-PAP] "Push Access Protocol Specification". Open Mobile Alliance™. OMA-WAP-TS-PAP [URL:http://www.openmobilealliance.org/](http://www.openmobilealliance.org/)
- [PUSH-MSG] "Push Message Specification". Open Mobile Alliance™. OMA-TS-Push_Message. [URL:http://www.openmobilealliance.org/](http://www.openmobilealliance.org/)
- [IOPETR] “Enabler Test Requirements for Dynamic Content Delivery”, Version 1.0, Open Mobile Alliance™, OMA-ETR-DPE-ETR-V1_0, [URL:http://www.openmobilealliance.org/](http://www.openmobilealliance.org/)
- [IOPEVP] “IOP Enabler Validation Plan for Dynamic Content Delivery”, Version 1.0, Open Mobile Alliance™, OMA-EVP-DPE-V1_0, [URL:http://www.openmobilealliance.org/](http://www.openmobilealliance.org/)
- [DPE-EICS-Client] “Client Enabler Implementation Conformance Statement for Dynamic Content Delivery”, Version 1.0, Open Mobile Alliance™, OMA-EICS-DPE-Client-V1_0, [URL:http://www.openmobilealliance.org/](http://www.openmobilealliance.org/)
- [DPE-EICS-Server] “Server Enabler Implementation Conformance Statement for Dynamic Content Delivery”, Version 1.0, Open Mobile Alliance™, OMA-EICS-DPE-Server-V1_0, [URL:http://www.openmobilealliance.org/](http://www.openmobilealliance.org/)

2.2 Informative References

- [OMADICT] “Dictionary for OMA Specifications”, Version 2.7, Open Mobile Alliance™, OMA-ORG-Dictionary-V2_7, [URL:http://www.openmobilealliance.org/](http://www.openmobilealliance.org/)

3. Terminology and Conventions

3.1 Conventions

The key words “MUST”, “MUST NOT”, “REQUIRED”, “SHALL”, “SHALL NOT”, “SHOULD”, “SHOULD NOT”, “RECOMMENDED”, “MAY”, and “OPTIONAL” in this document are to be interpreted as described in [RFC2119].

All sections and appendixes, except “Scope”, are normative, unless they are explicitly indicated to be informative.

The following numbering scheme is used:

xxx-y.z-con-number where:

xxx	Name of enabler, e.g. MMS or Browsing
y.z	Version of enabler release, e.g. 1.2 or 1.2.1
'con'	Indicating this test is a conformance test case
number	Leap number for the test case

Or

xxx-y.z-int-number where:

xxx	Name of enabler, e.g. MMS or Browsing
y.z	Version of enabler release, e.g. 1.2 or 1.2.1
'int'	Indicating this test is an interoperability test case
number	Leap number for the test case

3.2 Definitions

Core Vocabulary	An entity that fulfilling the client requirements of DPE.
Device	An entity that fulfilling the server requirements of DPE.
DPE Client	The overall set of characteristics and related parameters supported by a Device.
DPE Server	An entity fulfilling the server requirements of DPE.
Device Capability	The overall set of characteristics and related parameters supported by a Device.
Device Property	A hardware, software, or network characteristic that [is] associated with the Device Capability of a Device at a given point in time. A Device property can be either static or dynamic.
Dynamic Device Property	A Device property that may change its value e.g. as a result of hardware, software or configuration changes.
Static Device Property	A Device property that does not change its value. Examples are display resolution, processor type, etc.
Terminal	See [OMADICT].

3.3 Abbreviations

DC	DPE Client
DPE	Device Profile Evolution
DS	DPE Server
ERDEF	Enabler Requirement Definition
ERELED	Enabler Release Definition
ETR	Enabler Test Requirements
OMA	Open Mobile Alliance

OMNA	Open Mobile Naming Authority
RFC	Request for Comments
SP	Service Provider
UAProf	User Agent Profile
WBXML	WAP Binary XML
WSP	Wireless Session Protocol

4. Introduction

The purpose of this document is to provide test cases for DPE Enabler Release 1.0.

The implementation of some features is optional for the Clients and/or the Servers in the DPE Enabler. The tests associated with these optional features are marked as "(Includes Optional Features)" in the test specification.

The following items on an overall level are needed to adequately test the DPE enabler:

- A DPE Server
- A DPE Client with ability to determine the value of static and dynamic device properties selected from the DPE Core Vocabulary
- A means to drive the tests from the and DPE Server (“server driver”) sides, e.g. :
 - A DPE Test Service Provider with ability to exercise the DPE-3 interface
 - DPE Server vendors provided test tools

Note the term “driver” as used in the test case descriptions may apply to either a test driver or an actual application, as chosen by the client/server product vendor involved in the test.

4.1 Test Infrastructure Requirements

The diagram below details the test infrastructure required to test the enabler.

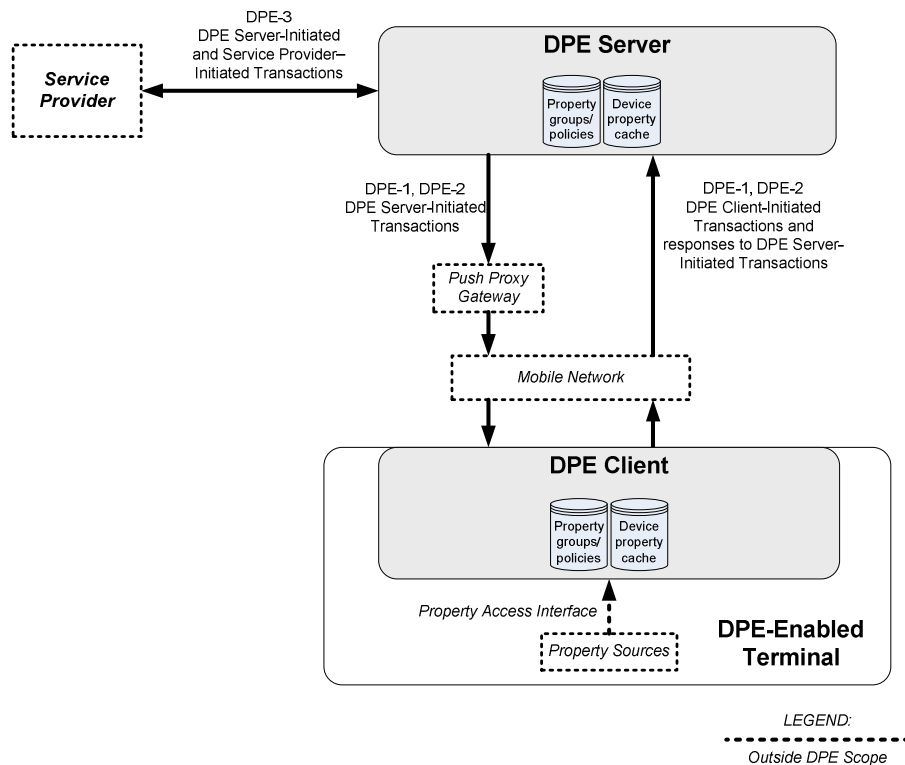


Figure 1: DPE Test environment

Fundamental equipment is:

- A HTTP capable infrastructure with IP connectivity via Ethernet, Wi-Fi or UMTS/GPRS;
- A WAP Push Server with DPE support, for DPE Servers without native OMA Push-OTA protocol support
- A DPE Test Service Provider with ability to exercise the DPE-3 interface

Optional equipment is:

-

4.2 Enabler Execution Flow

Several use case oriented scenarios are shown below.

4.2.1 Use Case: User has installed a memory card

A user has a memory-card capable device. The Service Provider has been informed of this capability previously, and established a report policy for the memory capabilities of the user’s device. When the user inserts a memory card, the DPE Client reports the card size and free space. The DPE Server forwards the report to the Service Provider.

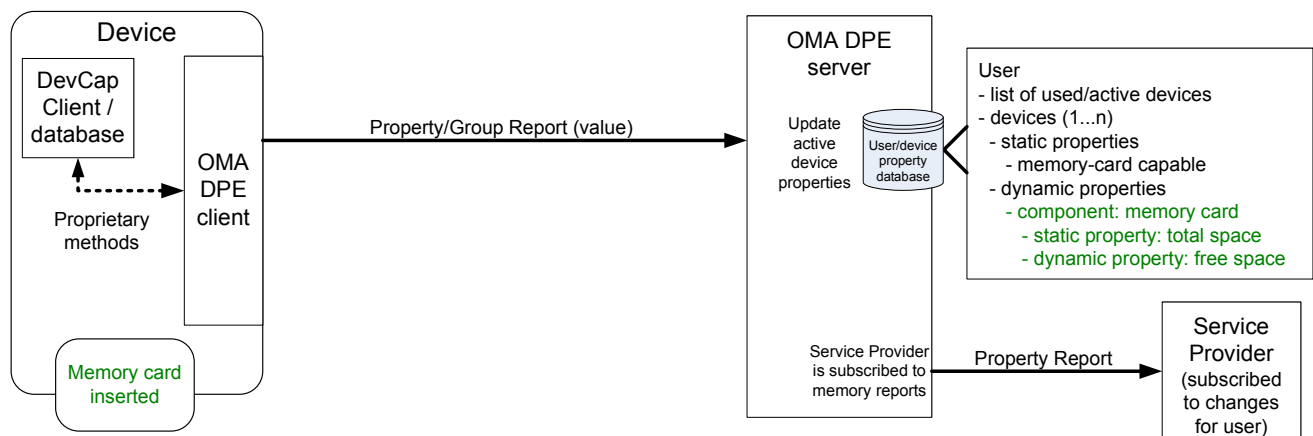


Figure 2: Use Case: User has installed a memory card

4.2.2 Use Case: Photo Blog

A novice blogger uses a blog widget and starts a new entry. The Service Provider wants to ensure that the user is offered options personalized to their current device capabilities. But the blog widget cannot report device capabilities directly, so the Service Provider queries the current camera capability from the DPE Server. The DPE Server queries the DPE Client, and reports the result to the Service Provider. The Service Provider determines that the user’s device is photo-capable, has two cameras, and is in low-resolution mode. The Service Provider personalizes the response based upon this information, offering options and guidance that simplify the user’s blogging experience.

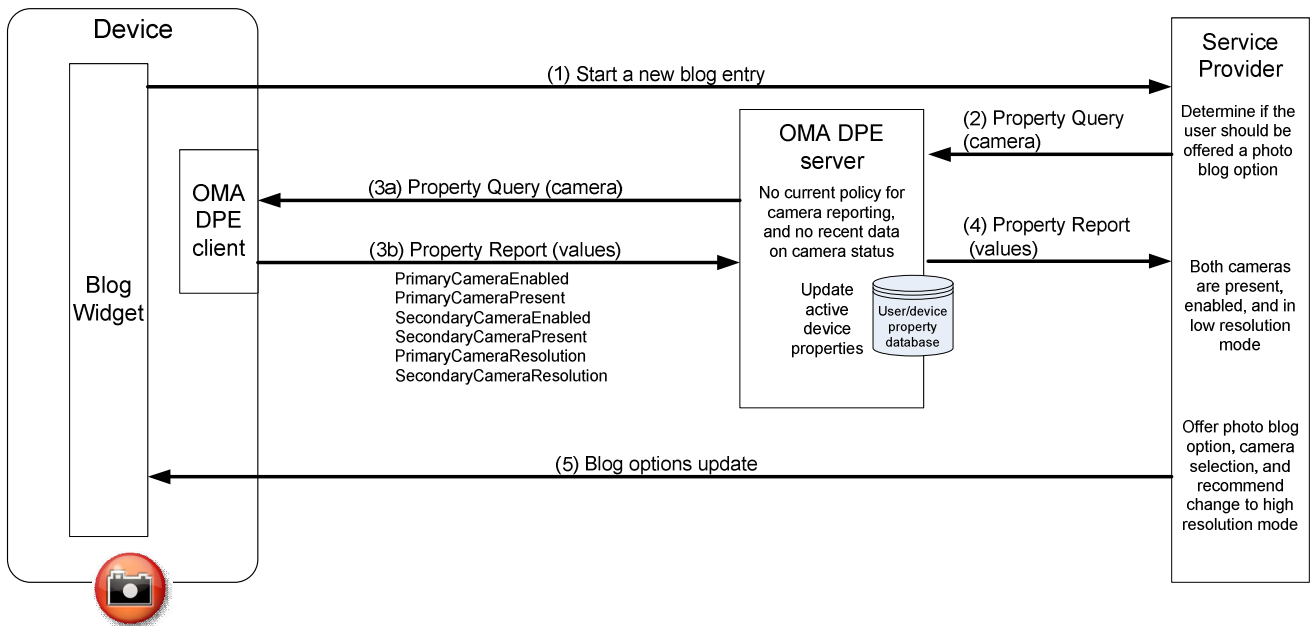


Figure 3: Use Case: Photo Blog

4.2.3 Use Case: Photo Blog

When the user switches devices, upon device startup the DPE Client establishes an association with the DPE Server. The DPE Server updates its current device database for the user. The DPE Server informs any Service Providers that are subscribed to changes for the user, if a change has occurred for a monitored property.

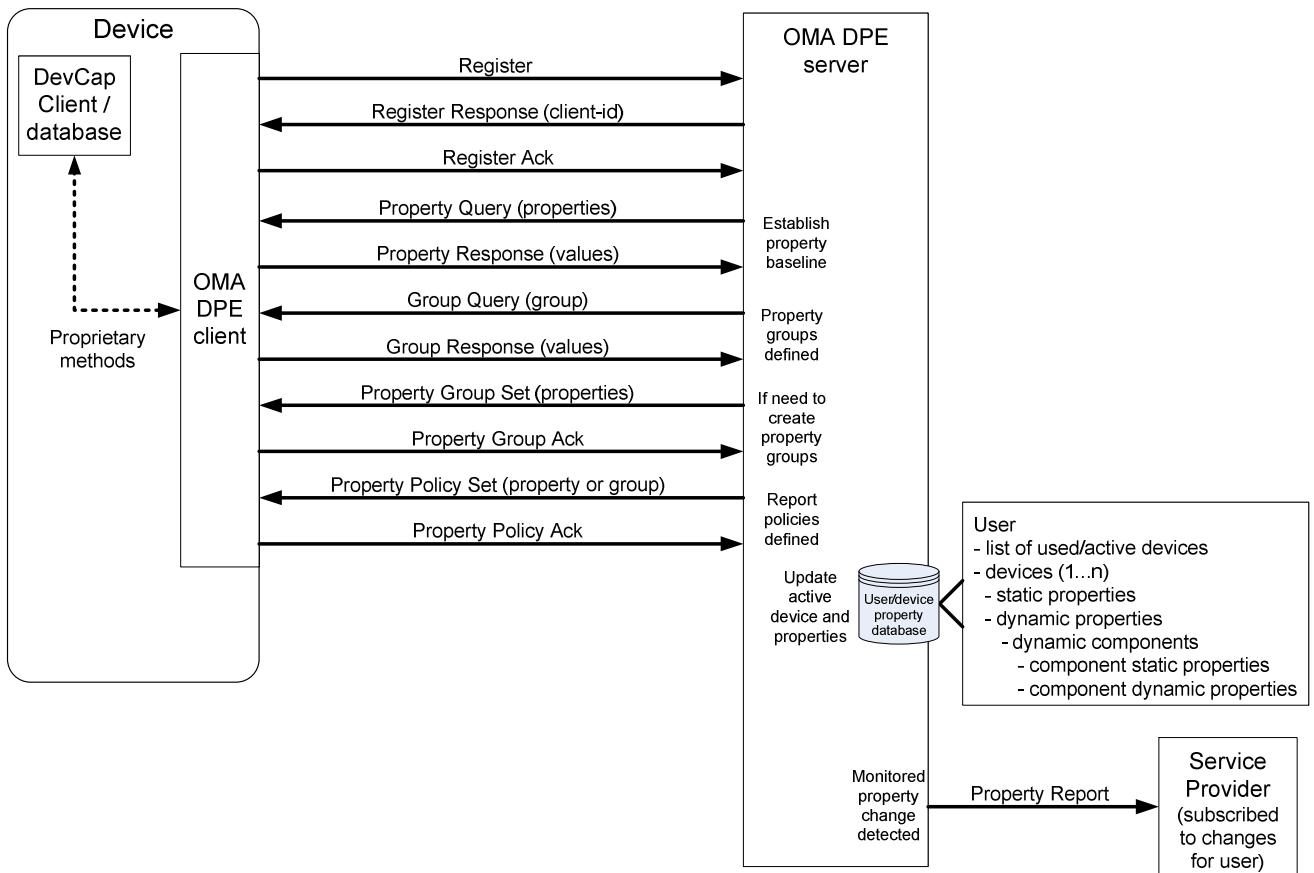


Figure 4: Use Case: Photo Blog

5. DPE Conformance Test Cases

Not available.

6. DPE Interoperability Test Cases

6.1 DPE-1.0-int-001 DPE-1 Client Initiated Registration

Test Case Id	DPE-1.0-int-001
Test Object	DPE Client and DPE Server
Test Case Description	DPE-1 Client Initiated Registration
Specification Reference	[DPE-TS] [6.1.1, 7.2, 8.1.1]
SCR Reference	DPE-C-001-M DPE-S-001-M DPE-C-010-M DPE-S-018-M DPE-C-011-M DPE-S-019-M
ETR Reference	REG-001
Tool	TBD
Test code	TBD
Preconditions	Equipment: - client and server State: - server configured to serve client - client configured with server details in connection profile Continuation of / Can be tested at the same time as: - Prerequisite for this test: -
Test Procedure	(1) Client activation is triggered, either by design (e.g. automatic upon startup) or by user interface (if a user-launchable client). This initiates the message sequence: DPE Client->DPE Server: Dpe1RegisterRequest DPE Server->DPE Client: Dpe1RegisterResponse DPE Client->DPE Server: Dpe1RegisterAck
Pass-Criteria	(1) Dpe1RegisterResponse is received and processed by the client without error

Table 1: DPE-1.0-int-001 DPE-1 Client Initiated Registration

6.2 DPE-1.0-int-002 DPE-1 Server Initiated Registration

Test Case Id	DPE-1.0-int-002
Test Object	DPE Client and DPE Server
Test Case Description	DPE-1 Server Initiated Registration
Specification Reference	[DPE-TS] [6.1.2, 7.1, 8.1.2]

SCR Reference	DPE-C-002-M DPE-S-002-M DPE-C-010-M DPE-S-018-M
ETR Reference	REG-002
Tool	TBD
Test code	TBD
Preconditions	Equipment: - client and server State: - server configured to serve client - client configured with server details in connection profile Continuation of / Can be tested at the same time as: - Prerequisite for this test: - DPE-1.0-int-001
Test Procedure	(1) Client registration is triggered by the server, either by design (e.g. upon provisioning a new client) or by server-internal/test feature. This initiates the message sequence: DPE Server->DPE Client: Dpe1RegisterCommand DPE Client->DPE Server: Dpe1RegisterRequest DPE Server->DPE Client: Dpe1RegisterResponse DPE Client->DPE Server: Dpe1RegisterAck
Pass-Criteria	(1) Dpe1RegisterResponse is received and processed by the client without error

Table 2: DPE-1.0-int-002 DPE-1 Server Initiated Registration

6.3 DPE-1.0-int-010 DPE-2 Property Query

Test Case Id	DPE-1.0-int-010
Test Object	DPE Client and DPE Server
Test Case Description	DPE-2 Property Query
Specification Reference	[DPE-TS] [6.2.1, 7.1, 7.2]
SCR Reference	DPE-C-003-M DPE-S-003-M DPE-C-010-M DPE-S-018-M DPE-C-011-M DPE-S-019-M
ETR Reference	PROP-001

Tool	TBD
Test code	TBD
Preconditions	<p>Equipment:</p> <ul style="list-style-type: none"> - client and server <p>State:</p> <ul style="list-style-type: none"> - client registered <p>Continuation of / Can be tested at the same time as:</p> <ul style="list-style-type: none"> - DPE-1.0-int-040 <p>Prerequisite for this test:</p> <ul style="list-style-type: none"> - DPE-1.0-int-001
Test Procedure	<p>(1) Server initiates a property query (for a specific property supported by the client device, determined at test time), either upon request of the SP (DPE-1.0-int-040) or through a server-internal/test feature. This initiates the message sequence:</p> <p>DPE Server->DPE Client: Dpe2PropertyQuery DPE Client->DPE Server: Dpe2PropertyResponse</p>
Pass-Criteria	(1) Dpe2PropertyResponse is received and processed by the server without error, including the current value of the requested property.

Table 3: DPE-1.0-int-010 DPE-2 Property Query

6.4 DPE-1.0-int-011 DPE-2 Property Policy Set and Report

Test Case Id	DPE-1.0-int-011
Test Object	DPE Client and DPE Server
Test Case Description	DPE-2 Property Policy Set and Report
Specification Reference	[DPE-TS] [6.2.4, 7.1, 7.2]
SCR Reference	DPE-C-006-M DPE-S-006-M DPE-C-010-M DPE-S-018-M DPE-C-011-M DPE-S-019-M
ETR Reference	POLC-001, POLC-002
Tool	TBD
Test code	TBD

Preconditions	<p>Equipment:</p> <ul style="list-style-type: none"> - client and server <p>State:</p> <ul style="list-style-type: none"> - client registered <p>Continuation of / Can be tested at the same time as:</p> <ul style="list-style-type: none"> - DPE-1.0-int-041 <p>Prerequisite for this test:</p> <ul style="list-style-type: none"> - DPE-1.0-int-001
Test Procedure	<p>(1) Server initiates a property policy set (for a specific property supported by the client device, determined at test time), either upon request of the SP (DPE-1.0-int-041) or through a server-internal/test feature. This initiates the message sequence:</p> <p>DPE Server->DPE Client: Dpe2PropertyPolicySet DPE Client->DPE Server: Dpe2PolicyAck</p> <p>(2) The policy is triggered for the monitored property. This initiates the message sequence:</p> <p>DPE Client->DPE Server: Dpe2PropertyReport</p>
Pass-Criteria	<p>(1) Dpe2PropertyReport is received and processed by the server without error, including the current value of the monitored property.</p>

Table 4: DPE-1.0-int-011 DPE-2 Property Policy Set and Report

6.5 DPE-1.0-int-012 DPE-2 Property Policy Release

Test Case Id	DPE-1.0-int-012
Test Object	DPE Client and DPE Server
Test Case Description	DPE-2 Property Policy Release
Specification Reference	[DPE-TS] [6.2.6, 7.1, 7.2]
SCR Reference	DPE-C-008-M DPE-S-008-M DPE-C-010-M DPE-S-018-M DPE-C-011-M DPE-S-019-M
ETR Reference	POLC-003
Tool	TBD
Test code	TBD

Preconditions	<p>Equipment:</p> <ul style="list-style-type: none"> - client and server <p>State:</p> <ul style="list-style-type: none"> - client registered - property policy established <p>Continuation of / Can be tested at the same time as:</p> <ul style="list-style-type: none"> - <p>Prerequisite for this test:</p> <ul style="list-style-type: none"> - DPE-1.0-int-011
Test Procedure	<p>(1) Server initiates a property policy release, either upon request of the SP (DPE-1.0-int-042) or through a server-internal/test feature. This initiates the message sequence:</p> <p>DPE Server->DPE Client: Dpe2PolicyRelease DPE Client->DPE Server: Dpe2PolicyAck</p> <p>(2) The triggering condition of the previously monitored property occurs after policy release.</p>
Pass-Criteria	<p>(1) No further Dpe2PropertyReport is sent by the client for the previously monitored property.</p>

Table 5: DPE-1.0-int-012 DPE-2 Property Policy Release

6.6 DPE-1.0-int-020 DPE-2 Group Set and Query

Test Case Id	DPE-1.0-int-020
Test Object	DPE Client and DPE Server
Test Case Description	DPE-2 Group Set and Query
Specification Reference	[DPE-TS] [6.2.2, 6.2.3, 7.1, 7.2]
SCR Reference	DPE-C-004-M DPE-S-004-M DPE-C-005-M DPE-S-005-M DPE-C-010-M DPE-S-018-M DPE-C-011-M DPE-S-019-M
ETR Reference	GRP-001, GRP-002
Tool	TBD
Test code	TBD

Preconditions	<p>Equipment:</p> <ul style="list-style-type: none"> - client and server <p>State:</p> <ul style="list-style-type: none"> - client registered <p>Continuation of / Can be tested at the same time as:</p> <ul style="list-style-type: none"> - DPE-1.0-int-050 <p>Prerequisite for this test:</p> <ul style="list-style-type: none"> - DPE-1.0-int-001
Test Procedure	<p>(1) Server initiates a group set (for a set of properties supported by the client device, determined at test time), either upon request of the SP (DPE-1.0-int-050) or through a server-internal/test feature. This initiates the message sequence:</p> <p>DPE Server->DPE Client: Dpe2GroupSet DPE Client->DPE Server: Dpe2GroupAck</p> <p>(2) Server initiates a group query for the created group, either upon request of the SP (DPE-1.0-int-050) or through a server-internal/test feature. This initiates the message sequence:</p> <p>DPE Server->DPE Client: Dpe2GroupQuery DPE Client->DPE Server: Dpe2GroupResponse</p>
Pass-Criteria	<p>(1) Dpe2GroupResponse is received and processed by the server without error, including the current values of the queried property group.</p>

Table 6: DPE-1.0-int-020 DPE-2 Group Set and Query

6.7 DPE-1.0-int-021 DPE-2 Group Release

Test Case Id	DPE-1.0-int-021
Test Object	DPE Client and DPE Server
Test Case Description	DPE-2 Group Release
Specification Reference	[DPE-TS] [6.2.3, 7.1, 7.2]
SCR Reference	DPE-C-005-M DPE-S-005-M DPE-C-010-M DPE-S-018-M DPE-C-011-M DPE-S-019-M
ETR Reference	GRP-003
Tool	TBD
Test code	TBD

Preconditions	<p>Equipment:</p> <ul style="list-style-type: none"> - client and server <p>State:</p> <ul style="list-style-type: none"> - client registered - group defined <p>Continuation of / Can be tested at the same time as:</p> <ul style="list-style-type: none"> - DPE-1.0-int-051 <p>Prerequisite for this test:</p> <ul style="list-style-type: none"> - DPE-1.0-int-020
Test Procedure	<p>(1) Server initiates a group release, either upon request of the SP (DPE-1.0-int-051) or through a server-internal/test feature. This initiates the message sequence:</p> <p>DPE Server->DPE Client: Dpe2GroupRelease DPE Client->DPE Server: Dpe2GroupAck</p>
Pass-Criteria	(1) Dpe2GroupAck is received by the server and is processed without error.

Table 7: DPE-1.0-int-021 DPE-2 Group Release

6.8 DPE-1.0-int-022 DPE-2 Group Policy Set and Report

Test Case Id	DPE-1.0-int-022
Test Object	DPE Client and DPE Server
Test Case Description	DPE-2 Group Policy Set and Report
Specification Reference	[DPE-TS] [6.2.5, 7.1, 7.2]
SCR Reference	DPE-C-007-M DPE-S-007-M DPE-C-010-M DPE-S-018-M DPE-C-011-M DPE-S-019-M
ETR Reference	POLC-004, POLC-005
Tool	TBD
Test code	TBD
Preconditions	<p>Equipment:</p> <ul style="list-style-type: none"> - client and server <p>State:</p> <ul style="list-style-type: none"> - client registered <p>Continuation of / Can be tested at the same time as:</p> <ul style="list-style-type: none"> - DPE-1.0-int-052 <p>Prerequisite for this test:</p> <ul style="list-style-type: none"> - DPE-1.0-int-020

Test Procedure	<p>(1) Server initiates a group policy set (for a defined group), either upon request of the SP (DPE-1.0-int-042) or through a server-internal/test feature. This initiates the message sequence: DPE Server->DPE Client: Dpe2GroupPolicySet DPE Client->DPE Server: Dpe2PolicyAck</p> <p>(2) The policy is triggered for the monitored group. This initiates the message sequence: DPE Client->DPE Server: Dpe2GroupReport</p>
Pass-Criteria	<p>(1) Dpe2GroupReport is received and processed by the server without error, including the current values of the monitored property group.</p>

Table 8: DPE-1.0-int-022 DPE-2 Group Policy Set and Report

6.9 DPE-1.0-int-023 DPE-2 Group Policy Release

Test Case Id	DPE-1.0-int-023
Test Object	DPE Client and DPE Server
Test Case Description	DPE-2 Group Policy Release
Specification Reference	[DPE-TS] [6.2.6, 7.1, 7.2]
SCR Reference	DPE-C-008-M DPE-S-008-M DPE-C-010-M DPE-S-018-M DPE-C-011-M DPE-S-019-M
ETR Reference	POLC-003
Tool	TBD
Test code	TBD
Preconditions	Equipment: - client and server State: - client registered - group defined and a group policy established for it Continuation of / Can be tested at the same time as: - Prerequisite for this test: - DPE-1.0-int-022
Test Procedure	<p>(1) Server initiates a group policy release, either upon request of the SP (DPE-1.0-int-053) or through a server-internal/test feature. This initiates the message sequence: DPE Server->DPE Client: Dpe2PolicyRelease DPE Client->DPE Server: Dpe2PolicyAck</p> <p>(2) The triggering condition of the previously monitored group occurs after policy release.</p>

Pass-Criteria	(1) No further Dpe2GroupReport is sent by the client for the previously monitored group.
----------------------	--

Table 9: DPE-1.0-int-023 DPE-2 Group Policy Release

6.10 DPE-1.0-int-030 DPE-2 Any-Change Policy

Test Case Id	DPE-1.0-int-030
Test Object	DPE Client and DPE Server
Test Case Description	DPE-2 Any-Change Policy
Specification Reference	[DPE-TS] [6.4, 7.2]
SCR Reference	DPE-C-009-M DPE-S-017-M DPE-C-011-M DPE-S-019-M
ETR Reference	POLC-006
Tool	TBD
Test code	TBD
Preconditions	Equipment: - client and server State: - client registered Continuation of / Can be tested at the same time as: - DPE-1.0-int-060 Prerequisite for this test: - DPE-1.0-int-011 - DPE-1.0-int-020 - DPE-1.0-int-022
Test Procedure	(1) DPE-1.0-int-011 is executed (for SP-initiated policy set, via DPE-1.0-int-060), with the Policy-Type set to Any-Change. (2) DPE-1.0-int-020 is executed, and includes the property monitored in step (1) as a member of the group. (3) DPE-1.0-int-022 is executed (for SP-initiated policy set, via DPE-1.0-int-060) for the group defined in step (2), with the Policy-Type set to Any-Change. (4) A change occurs in the property monitored in step (1). This initiates the messages (message order may vary): DPE Client->DPE Server: Dpe2PropertyReport DPE Client->DPE Server: Dpe2GroupReport
Pass-Criteria	(1) Dpe2PropertyReport and Dpe2GroupReport are received and processed by the server without error, including the current value of the property monitored in step (1).

Table 10: DPE-1.0-int-030 DPE-2 Any-Change Policy

6.11 DPE-1.0-int-031 DPE-2 Exact-Match Policy

Test Case Id	DPE-1.0-int-031
Test Object	DPE Client and DPE Server
Test Case Description	DPE-2 Exact-Match Policy
Specification Reference	[DPE-TS] [6.4, 7.2]
SCR Reference	DPE-C-009-M DPE-S-017-M DPE-C-011-M DPE-S-019-M
ETR Reference	POLC-006
Tool	TBD
Test code	TBD
Preconditions	Equipment: - client and server State: - client registered Continuation of / Can be tested at the same time as: - DPE-1.0-int-061 Prerequisite for this test: - DPE-1.0-int-011 Note that this policy type is not applicable for group policies.
Test Procedure	(1) DPE-1.0-int-011 is executed (for SP-initiated policy set, via DPE-1.0-int-061), with the Policy-Type set to Exact-Match. (2) An Exact-Match change occurs in the property monitored in step (1). This initiates the message: DPE Client->DPE Server: Dpe2PropertyReport
Pass-Criteria	(1) Dpe2PropertyReport is received and processed by the server without error, including the current value of the property monitored in step (1).

Table 11: DPE-1.0-int-031 DPE-2 Exact-Match Policy

6.12 DPE-1.0-int-032 DPE-2 List-Match Policy

Test Case Id	DPE-1.0-int-032
Test Object	DPE Client and DPE Server
Test Case Description	DPE-2 List-Match Policy
Specification Reference	[DPE-TS] [6.4, 7.2]
SCR Reference	DPE-C-009-M DPE-S-017-M DPE-C-011-M DPE-S-019-M
ETR Reference	POLC-006

Tool	TBD
Test code	TBD
Preconditions	<p>Equipment:</p> <ul style="list-style-type: none"> - client and server <p>State:</p> <ul style="list-style-type: none"> - client registered <p>Continuation of / Can be tested at the same time as:</p> <ul style="list-style-type: none"> - DPE-1.0-int-062 <p>Prerequisite for this test:</p> <ul style="list-style-type: none"> - DPE-1.0-int-011 <p>Note that this policy type is not applicable for group policies.</p>
Test Procedure	<p>(1) DPE-1.0-int-011 is executed (for SP-initiated policy set, via DPE-1.0-int-062), with the Policy-Type set to List-Match.</p> <p>(2) A List-Match change occurs in the property monitored in step (1). This initiates the message:</p> <p>DPE Client->DPE Server: Dpe2PropertyReport</p>
Pass-Criteria	(1) Dpe2PropertyReport is received and processed by the server without error, including the current value of the property monitored in step (1).

Table 12: DPE-1.0-int-032 DPE-2 List-Match Policy

6.13 DPE-1.0-int-033 DPE-2 In-Range Policy

Test Case Id	DPE-1.0-int-033
Test Object	DPE Client and DPE Server
Test Case Description	DPE-2 In-Range Policy
Specification Reference	[DPE-TS] [6.4, 7.2]
SCR Reference	<p>DPE-C-009-M</p> <p>DPE-S-017-M</p> <p>DPE-C-011-M</p> <p>DPE-S-019-M</p>
ETR Reference	POLC-006
Tool	TBD
Test code	TBD
Preconditions	<p>Equipment:</p> <ul style="list-style-type: none"> - client and server <p>State:</p> <ul style="list-style-type: none"> - client registered <p>Continuation of / Can be tested at the same time as:</p> <ul style="list-style-type: none"> - DPE-1.0-int-063 <p>Prerequisite for this test:</p> <ul style="list-style-type: none"> - DPE-1.0-int-011 <p>Note that this policy type is not applicable for group policies.</p>

Test Procedure	(1) DPE-1.0-int-011 is executed (for SP-initiated policy set, via DPE-1.0-int-063), with the Policy-Type set to In-Range. (2) An In-Range change occurs in the property monitored in step (1). This initiates the message: DPE Client->DPE Server: Dpe2PropertyReport
Pass-Criteria	(1) Dpe2PropertyReport is received and processed by the server without error, including the current value of the property monitored in step (1).

Table 13: DPE-1.0-int-033 DPE-2 In-Range Policy

6.14 DPE-1.0-int-034 DPE-2 Out-Of-Range Policy

Test Case Id	DPE-1.0-int-034
Test Object	DPE Client and DPE Server
Test Case Description	DPE-2 Out-Of-Range Policy
Specification Reference	[DPE-TS] [6.4, 7.2]
SCR Reference	DPE-C-009-M DPE-S-017-M DPE-C-011-M DPE-S-019-M
ETR Reference	POLC-006
Tool	TBD
Test code	TBD
Preconditions	Equipment: - client and server State: - client registered Continuation of / Can be tested at the same time as: - DPE-1.0-int-064 Prerequisite for this test: - DPE-1.0-int-011 Note that this policy type is not applicable for group policies.
Test Procedure	(1) DPE-1.0-int-011 is executed (for SP-initiated policy set, via DPE-1.0-int-064), with the Policy-Type set to Out-Of-Range. (2) An Out-Of-Range change occurs in the property monitored in step (1). This initiates the message: DPE Client->DPE Server: Dpe2PropertyReport
Pass-Criteria	(1) Dpe2PropertyReport is received and processed by the server without error, including the current value of the property monitored in step (1).

Table 14: DPE-1.0-int-034 DPE-2 Out-Of-Range Policy

6.15 DPE-1.0-int-035 DPE-2 Property-Support Policy

Test Case Id	DPE-1.0-int-035
Test Object	DPE Client and DPE Server
Test Case Description	DPE-2 Property-Support Policy
Specification Reference	[DPE-TS] [6.4, 7.2]
SCR Reference	DPE-C-009-M DPE-S-017-M DPE-C-011-M DPE-S-019-M
ETR Reference	POLC-006
Tool	TBD
Test code	TBD
Preconditions	Equipment: - client and server State: - client registered Continuation of / Can be tested at the same time as: - DPE-1.0-int-065 Prerequisite for this test: - DPE-1.0-int-011 - DPE-1.0-int-020 - DPE-1.0-int-022
Test Procedure	(1) DPE-1.0-int-011 is executed (for SP-initiated policy set, via DPE-1.0-int-065), with the Policy-Type set to Property-Support. (2) DPE-1.0-int-020 is executed, and includes the property for which a change in support will occur later in the test. (3) DPE-1.0-int-022 is executed (for SP-initiated policy set, via DPE-1.0-int-065) for the group defined in step (2), with the Policy-Type set to Property-Support. (4) A Property-Support change occurs in the property included in step (2). This initiates the messages (message order may vary): DPE Client->DPE Server: Dpe2PropertyReport DPE Client->DPE Server: Dpe2GroupReport
Pass-Criteria	(1) Dpe2PropertyReport and Dpe2GroupReport are received and processed by the server without error, and identify the property for which support has changed, and the current value if supported.

Table 15: DPE-1.0-int-035 DPE-2 Property-Support Policy

6.16 DPE-1.0-int-036 DPE-2 Schedule Policy

Test Case Id	DPE-1.0-int-036
Test Object	DPE Client and DPE Server

Test Case Description	DPE-2 Schedule Policy
Specification Reference	[DPE-TS] [6.4, 7.2]
SCR Reference	DPE-C-009-M DPE-S-017-M DPE-C-011-M DPE-S-019-M
ETR Reference	POLC-006
Tool	TBD
Test code	TBD
Preconditions	Equipment: - client and server State: - client registered Continuation of / Can be tested at the same time as: - DPE-1.0-int-066 Prerequisite for this test: - DPE-1.0-int-011 - DPE-1.0-int-020 - DPE-1.0-int-022
Test Procedure	(1) DPE-1.0-int-011 is executed (for SP-initiated policy set, via DPE-1.0-int-066), with the Policy-Type set to Schedule. (2) DPE-1.0-int-020 is executed, and includes any arbitrary property set. (3) DPE-1.0-int-022 is executed (for SP-initiated policy set, via DPE-1.0-int-066) for the group defined in step (2), with the Policy-Type set to Schedule. (4) The scheduled time for reporting arrives. This initiates the messages (message order may vary): DPE Client->DPE Server: Dpe2PropertyReport DPE Client->DPE Server: Dpe2GroupReport
Pass-Criteria	(1) Dpe2PropertyReport and Dpe2GroupReport are received and processed by the server without error, and identify the values of the properties being monitored.

Table 16: DPE-1.0-int-036 DPE-2 Schedule Policy

6.17 DPE-1.0-int-040 DPE-3 Property Query

Test Case Id	DPE-1.0-int-040
Test Object	DPE Client and DPE Server
Test Case Description	DPE-3 Property Query
Specification Reference	[DPE-TS] [6.3.1, 8.2.1.2]
SCR Reference	DPE-S-009-M DPE-S-020-M
ETR Reference	PROP-001

Tool	TBD
Test code	TBD
Preconditions	<p>Equipment:</p> <ul style="list-style-type: none"> - client and server - server driver (or SP) <p>State:</p> <ul style="list-style-type: none"> - client registered <p>Continuation of / Can be tested at the same time as:</p> <ul style="list-style-type: none"> - DPE-1.0-int-010 <p>Prerequisite for this test:</p> <ul style="list-style-type: none"> - DPE-1.0-int-001
Test Procedure	<p>(1) SP initiates a property query (for a specific property supported by the client device, determined at test time). This initiates the message sequence:</p> <p>Service Provider->DPE Server: Dpe3PropertyQuery (per DPE-1.0-int-010)</p> <p>DPE Server->Service Provider: Dpe3PropertyResponse</p> <p>(2) SP initiates a property query for the same property queried in (1), with the Max-Age parameter set to ensure that the property value cached in (1) is still valid. This initiates the message sequence:</p> <p>Service Provider->DPE Server: Dpe3PropertyQuery DPE Server->Service Provider: Dpe3PropertyResponse</p>
Pass-Criteria	(1) For both queries, Dpe3PropertyResponse is received and processed by the SP without error, including the current value of the requested property.

Table 17: DPE-1.0-int-040 DPE-3 Property Query

6.18 DPE-1.0-int-041 DPE-3 Property Policy Set and Report

Test Case Id	DPE-1.0-int-041
Test Object	DPE Client and DPE Server
Test Case Description	DPE-3 Property Policy Set and Report
Specification Reference	[DPE-TS] [6.3.4, 8.2.1.2]
SCR Reference	DPE-S-012-M DPE-S-021-M
ETR Reference	POLC-001, POLC-002
Tool	TBD
Test code	TBD

Preconditions	<p>Equipment:</p> <ul style="list-style-type: none"> - client and server - server driver (or SP) <p>State:</p> <ul style="list-style-type: none"> - client registered <p>Continuation of / Can be tested at the same time as:</p> <ul style="list-style-type: none"> - DPE-1.0-int-011 <p>Prerequisite for this test:</p> <ul style="list-style-type: none"> - DPE-1.0-int-001
Test Procedure	<p>(1) SP initiates a property policy set (for a specific property supported by the client device, determined at test time). This initiates the message sequence:</p> <p>Service Provider->DPE Server: Dpe3PropertyPolicySet (per DPE-1.0-int-011)</p> <p>DPE Server->Service Provider: Dpe3PolicyAck</p> <p>(2) The policy is triggered for the monitored property. This initiates the message sequence:</p> <p>(per DPE-1.0-int-011)</p> <p>DPE Server->Service Provider: Dpe3PropertyReport</p>
Pass-Criteria	<p>(1) Dpe3PropertyReport is received and processed by the SP without error, including the current value of the monitored property.</p>

Table 18: DPE-1.0-int-041 DPE-3 Property Policy Set and Report

6.19 DPE-1.0-int-042 DPE-3 Property Policy Release

Test Case Id	DPE-1.0-int-042
Test Object	DPE Client and DPE Server
Test Case Description	DPE-3 Property Policy Release
Specification Reference	[DPE-TS] [6.3.6, 8.2.1.2]
SCR Reference	DPE-S-014-M DPE-S-021-M
ETR Reference	POLC-003
Tool	TBD
Test code	TBD

Preconditions	<p>Equipment:</p> <ul style="list-style-type: none"> - client and server - server driver (or SP) <p>State:</p> <ul style="list-style-type: none"> - client registered - property policy established <p>Continuation of / Can be tested at the same time as:</p> <ul style="list-style-type: none"> - DPE-1.0-int-012 <p>Prerequisite for this test:</p> <ul style="list-style-type: none"> - DPE-1.0-int-041
Test Procedure	<p>(1) SP initiates a property policy release. This initiates the message sequence: Service Provider->DPE Server: Dpe3PolicyRelease (per DPE-1.0-int-012) DPE Server->Service Provider: Dpe3PolicyAck</p> <p>(2) The triggering condition of the previously monitored property occurs after policy release.</p>
Pass-Criteria	<p>(1) No further Dpe3PropertyReport is received by the SP for the previously monitored property.</p>

Table 19: DPE-1.0-int-042 DPE-3 Property Policy Release

6.20 DPE-1.0-int-050 DPE-3 Group Set and Query

Test Case Id	DPE-1.0-int-050
Test Object	DPE Client and DPE Server
Test Case Description	DPE-3 Group Set and Query
Specification Reference	[DPE-TS] [6.3.2, 6.3.3, 8.2.1.2]
SCR Reference	DPE-S-010-M DPE-S-011-M DPE-S-021-M
ETR Reference	GRP-001, GRP-002
Tool	TBD
Test code	TBD
Preconditions	<p>Equipment:</p> <ul style="list-style-type: none"> - client and server - server driver (or SP) <p>State:</p> <ul style="list-style-type: none"> - client registered <p>Continuation of / Can be tested at the same time as:</p> <ul style="list-style-type: none"> - DPE-1.0-int-020 <p>Prerequisite for this test:</p> <ul style="list-style-type: none"> - DPE-1.0-int-001

Test Procedure	<p>(1) SP initiates a group set (for a set of properties supported by the client device, determined at test time). This initiates the message sequence: Service Provider->DPE Server: Dpe3GroupSet (per DPE-1.0-int-020) DPE Server->Service Provider: Dpe3GroupAck</p> <p>(2) SP initiates a group query for the created group. This initiates the message sequence: Service Provider->DPE Server: Dpe3GroupQuery (per DPE-1.0-int-020) DPE Server->Service Provider: Dpe3GroupResponse</p>
Pass-Criteria	(1) Dpe3GroupResponse is received and processed by the SP without error, including the current values of the queried property group.

Table 20: DPE-1.0-int-050 DPE-3 Group Set and Query

6.21 DPE-1.0-int-051 DPE-3 Group Release

Test Case Id	DPE-1.0-int-051
Test Object	DPE Client and DPE Server
Test Case Description	DPE-3 Group Release
Specification Reference	[DPE-TS] [6.3.3, 8.2.1.2]
SCR Reference	DPE-S-011-M DPE-S-021-M
ETR Reference	GRP-003
Tool	TBD
Test code	TBD
Preconditions	<p>Equipment:</p> <ul style="list-style-type: none"> - client and server - server driver (or SP) <p>State:</p> <ul style="list-style-type: none"> - client registered - group defined <p>Continuation of / Can be tested at the same time as:</p> <ul style="list-style-type: none"> - DPE-1.0-int-021 <p>Prerequisite for this test:</p> <ul style="list-style-type: none"> - DPE-1.0-int-050
Test Procedure	<p>(1) SP initiates a group release. This initiates the message sequence: Service Provider->DPE Server: Dpe3GroupRelease (per DPE-1.0-int-021) DPE Server->Service Provider: Dpe3GroupAck</p>
Pass-Criteria	(1) Dpe3GroupAck is received by the SP and is processed without error.

Table 21: DPE-1.0-int-051 DPE-3 Group Release

6.22 DPE-1.0-int-052 DPE-3 Group Policy Set and Report

Test Case Id	DPE-1.0-int-052
Test Object	DPE Client and DPE Server
Test Case Description	DPE-3 Group Policy Set and Report
Specification Reference	[DPE-TS] [6.3.5, 8.2.1.2]
SCR Reference	DPE-S-013-M DPE-S-021-M
ETR Reference	POLC-004, POLC-005
Tool	TBD
Test code	TBD
Preconditions	Equipment: - client and server - server driver (or SP) State: - client registered Continuation of / Can be tested at the same time as: - DPE-1.0-int-022 Prerequisite for this test: - DPE-1.0-int-050
Test Procedure	(1) SP initiates a group policy set (for a defined group). This initiates the message sequence: Service Provider->DPE Server: Dpe3GroupPolicySet (per DPE-1.0-int-022) DPE Server->Service Provider: Dpe3PolicyAck (2) The policy is triggered for the monitored group. This initiates the message sequence: DPE Server->Service Provider: Dpe3GroupReport
Pass-Criteria	(1) Dpe3GroupReport is received and processed by the SP without error, including the current values of the monitored property group.

Table 22: DPE-1.0-int-052 DPE-3 Group Policy Set and Report

6.23 DPE-1.0-int-053 DPE-3 Group Policy Release

Test Case Id	DPE-1.0-int-053
Test Object	DPE Client and DPE Server
Test Case Description	DPE-3 Group Policy Release
Specification Reference	[DPE-TS] [6.2.6, 8.2.1.2]
SCR Reference	DPE-S-014-M DPE-S-021-M

ETR Reference	POLC-003
Tool	TBD
Test code	TBD
Preconditions	<p>Equipment:</p> <ul style="list-style-type: none"> - client and server - server driver (or SP) <p>State:</p> <ul style="list-style-type: none"> - client registered - group defined and a group policy established for it <p>Continuation of / Can be tested at the same time as:</p> <ul style="list-style-type: none"> - DPE-1.0-int-023 <p>Prerequisite for this test:</p> <ul style="list-style-type: none"> - DPE-1.0-int-052
Test Procedure	<p>(1) SP initiates a group policy release. This initiates the message sequence: Service Provider->DPE Server: Dpe3PolicyRelease (per DPE-1.0-int-023) DPE Server->Service Provider: Dpe3PolicyAck</p> <p>(2) The triggering condition of the previously monitored group occurs after policy release.</p>
Pass-Criteria	(1) No further Dpe3GroupReport is received by the SP for the previously monitored group.

Table 23: DPE-1.0-int-053 DPE-3 Group Policy Release

6.24 DPE-1.0-int-060 DPE-3 Any-Change Policy

Test Case Id	DPE-1.0-int-060
Test Object	DPE Client and DPE Server
Test Case Description	DPE-3 Any-Change Policy
Specification Reference	[DPE-TS] [6.4, 8.2.1.2]
SCR Reference	DPE-C-009-M DPE-S-017-M DPE-S-021-M
ETR Reference	POLC-006
Tool	TBD
Test code	TBD

Preconditions	<p>Equipment:</p> <ul style="list-style-type: none"> - client and server - server driver (or SP) <p>State:</p> <ul style="list-style-type: none"> - client registered <p>Continuation of / Can be tested at the same time as:</p> <ul style="list-style-type: none"> - DPE-1.0-int-030 <p>Prerequisite for this test:</p> <ul style="list-style-type: none"> - DPE-1.0-int-041 - DPE-1.0-int-050 - DPE-1.0-int-052
Test Procedure	<p>(1) DPE-1.0-int-041 is executed, with the Policy-Type set to Any-Change.</p> <p>(2) DPE-1.0-int-050 is executed, and includes the property monitored in step (1) as a member of the group.</p> <p>(3) DPE-1.0-int-052 is executed for the group defined in step (2), with the Policy-Type set to Any-Change.</p> <p>(4) A change occurs in the property monitored in step (1). This initiates the message sequence (message order may vary): (per DPE-1.0-int-030)</p> <p>DPE Server->Service Provider: Dpe3PropertyReport DPE Server->Service Provider: Dpe3GroupReport</p>
Pass-Criteria	<p>(1) Dpe3PropertyReport and Dpe3GroupReport are received and processed by the SP without error, including the current value of the property monitored in step (1).</p>

Table 24: DPE-1.0-int-060 DPE-3 Any-Change Policy

6.25 DPE-1.0-int-061 DPE-3 Exact-Match Policy

Test Case Id	DPE-1.0-int-061
Test Object	DPE Client and DPE Server
Test Case Description	DPE-3 Exact-Match Policy
Specification Reference	[DPE-TS] [6.4, 8.2.1.2]
SCR Reference	DPE-C-009-M DPE-S-017-M DPE-S-021-M
ETR Reference	POLC-006
Tool	TBD
Test code	TBD

Preconditions	<p>Equipment:</p> <ul style="list-style-type: none"> - client and server - server driver (or SP) <p>State:</p> <ul style="list-style-type: none"> - client registered <p>Continuation of / Can be tested at the same time as:</p> <ul style="list-style-type: none"> - DPE-1.0-int-031 <p>Prerequisite for this test:</p> <ul style="list-style-type: none"> - DPE-1.0-int-041 <p>Note that this policy type is not applicable for group policies.</p>
Test Procedure	<p>(1) DPE-1.0-int-041 is executed, with the Policy-Type set to Exact-Match.</p> <p>(2) An Exact-Match change occurs in the property monitored in step (1). This initiates the message sequence:</p> <p>(per DPE-1.0-int-031)</p> <p>DPE Server->Service Provider: Dpe3PropertyReport</p>
Pass-Criteria	<p>(1) Dpe3PropertyReport is received and processed by the SP without error, including the current value of the property monitored in step (1).</p>

Table 25: DPE-1.0-int-061 DPE-3 Exact-Match Policy

6.26 DPE-1.0-int-062 DPE-3 List-Match Policy

Test Case Id	DPE-1.0-int-062
Test Object	DPE Client and DPE Server
Test Case Description	DPE-3 List-Match Policy
Specification Reference	[DPE-TS] [6.4, 8.2.1.2]
SCR Reference	DPE-C-009-M DPE-S-017-M DPE-S-021-M
ETR Reference	POLC-006
Tool	TBD
Test code	TBD
Preconditions	<p>Equipment:</p> <ul style="list-style-type: none"> - client and server - server driver (or SP) <p>State:</p> <ul style="list-style-type: none"> - client registered <p>Continuation of / Can be tested at the same time as:</p> <ul style="list-style-type: none"> - DPE-1.0-int-032 <p>Prerequisite for this test:</p> <ul style="list-style-type: none"> - DPE-1.0-int-041 <p>Note that this policy type is not applicable for group policies.</p>

Test Procedure	(1) DPE-1.0-int-041 is executed, with the Policy-Type set to List-Match. (2) A List-Match change occurs in the property monitored in step (1). This initiates the message sequence: (per DPE-1.0-int-032) DPE Server->Service Provider: Dpe3PropertyReport
Pass-Criteria	(1) Dpe3PropertyReport is received and processed by the SP without error, including the current value of the property monitored in step (1).

Table 26: DPE-1.0-int-062 DPE-3 List-Match Policy

6.27 DPE-1.0-int-063 DPE-3 In-Range Policy

Test Case Id	DPE-1.0-int-063
Test Object	DPE Client and DPE Server
Test Case Description	DPE-3 In-Range Policy
Specification Reference	[DPE-TS] [6.4, 8.2.1.2]
SCR Reference	DPE-C-009-M DPE-S-017-M DPE-S-021-M
ETR Reference	POLC-006
Tool	TBD
Test code	TBD
Preconditions	Equipment: - client and server - server driver (or SP) State: - client registered Continuation of / Can be tested at the same time as: - DPE-1.0-int-033 Prerequisite for this test: - DPE-1.0-int-041 Note that this policy type is not applicable for group policies.
Test Procedure	(1) DPE-1.0-int-041 is executed, with the Policy-Type set to In-Range. (2) An In-Range change occurs in the property monitored in step (1). This initiates the message sequence: (per DPE-1.0-int-033) DPE Server->Service Provider: Dpe3PropertyReport
Pass-Criteria	(1) Dpe3PropertyReport is received and processed by the SP without error, including the current value of the property monitored in step (1).

Table 27: DPE-1.0-int-063 DPE-3 In-Range Policy

6.28 DPE-1.0-int-064 DPE-3 Out-Of-Range Policy

Test Case Id	DPE-1.0-int-064
Test Object	DPE Client and DPE Server
Test Case Description	DPE-3 Out-Of-Range Policy
Specification Reference	[DPE-TS] [6.4, 8.2.1.2]
SCR Reference	DPE-C-009-M DPE-S-017-M DPE-S-021-M
ETR Reference	POLC-006
Tool	TBD
Test code	TBD
Preconditions	Equipment: - client and server - server driver (or SP) State: - client registered Continuation of / Can be tested at the same time as: - DPE-1.0-int-034 Prerequisite for this test: - DPE-1.0-int-041 Note that this policy type is not applicable for group policies.
Test Procedure	(1) DPE-1.0-int-041 is executed, with the Policy-Type set to Out-Of-Range. (2) An Out-Of-Range change occurs in the property monitored in step (1). This initiates the message sequence: (per DPE-1.0-int-034) DPE Server->Service Provider: Dpe3PropertyReport
Pass-Criteria	(1) Dpe3PropertyReport is received and processed by the SP without error, including the current value of the property monitored in step (1).

Table 28: DPE-1.0-int-064 DPE-3 Out-Of-Range Policy

6.29 DPE-1.0-int-065 DPE-3 Property-Support Policy

Test Case Id	DPE-1.0-int-065
Test Object	DPE Client and DPE Server
Test Case Description	DPE-3 Property-Support Policy
Specification Reference	[DPE-TS] [6.4, 8.2.1.2]
SCR Reference	DPE-C-009-M DPE-S-017-M DPE-S-021-M
ETR Reference	POLC-006
Tool	TBD

Test code	TBD
Preconditions	<p>Equipment:</p> <ul style="list-style-type: none"> - client and server - server driver (or SP) <p>State:</p> <ul style="list-style-type: none"> - client registered <p>Continuation of / Can be tested at the same time as:</p> <ul style="list-style-type: none"> - DPE-1.0-int-035 <p>Prerequisite for this test:</p> <ul style="list-style-type: none"> - DPE-1.0-int-041 - DPE-1.0-int-050 - DPE-1.0-int-052
Test Procedure	<p>(1) DPE-1.0-int-041 is executed, with the Policy-Type set to Property-Support.</p> <p>(2) DPE-1.0-int-050 is executed, and includes the property for which a change in support will occur later in the test.</p> <p>(3) DPE-1.0-int-052 is executed for the group defined in step (2), with the Policy-Type set to Property-Support.</p> <p>(4) A Property-Support change occurs in the property included in step (2). This initiates the message sequence (message order may vary): (per DPE-1.0-int-035)</p> <p>DPE Server->Service Provider: Dpe3PropertyReport DPE Server->Service Provider: Dpe3GroupReport</p>
Pass-Criteria	(1) Dpe3PropertyReport and Dpe3GroupReport are received and processed by the SP without error, and identify the property for which support has changed, and the current value if supported.

Table 29: DPE-1.0-int-065 DPE-3 Property-Support Policy

6.30 DPE-1.0-int-066 DPE-3 Schedule Policy

Test Case Id	DPE-1.0-int-066
Test Object	DPE Client and DPE Server
Test Case Description	DPE-3 Schedule Policy
Specification Reference	[DPE-TS] [6.4, 8.2.1.2]
SCR Reference	DPE-C-009-M DPE-S-017-M DPE-S-021-M
ETR Reference	POLC-006
Tool	TBD
Test code	TBD

Preconditions	<p>Equipment:</p> <ul style="list-style-type: none"> - client and server - server driver (or SP) <p>State:</p> <ul style="list-style-type: none"> - client registered <p>Continuation of / Can be tested at the same time as:</p> <ul style="list-style-type: none"> - DPE-1.0-int-036 <p>Prerequisite for this test:</p> <ul style="list-style-type: none"> - DPE-1.0-int-041 - DPE-1.0-int-050 - DPE-1.0-int-052
Test Procedure	<p>(1) DPE-1.0-int-041 is executed, with the Policy-Type set to Schedule.</p> <p>(2) DPE-1.0-int-050 is executed, and includes any arbitrary property set.</p> <p>(3) DPE-1.0-int-052 is executed for the group defined in step (2), with the Policy-Type set to Schedule.</p> <p>(4) The scheduled time for reporting arrives. This initiates the message sequence (message order may vary):</p> <p>(per DPE-1.0-int-036)</p> <p>DPE Server->Service Provider: Dpe3PropertyReport</p> <p>DPE Server->Service Provider: Dpe3GroupReport</p>
Pass-Criteria	<p>(1) Dpe3PropertyReport and Dpe3GroupReport are received and processed by the SP without error, and identify the values of the properties being monitored.</p>

Table 30: DPE-1.0-int-066 DPE-3 Schedule Policy

6.31 DPE-1.0-int-070 DPE-3 Client ID Query

Test Case Id	DPE-1.0-int-070
Test Object	DPE Client and DPE Server
Test Case Description	DPE-3 Schedule Policy
Specification Reference	[DPE-TS] [6.3.7]
SCR Reference	DPE-S-015-M
ETR Reference	CLID-001
Tool	TBD
Test code	TBD

Preconditions	<p>Equipment:</p> <ul style="list-style-type: none"> - client and server - server driver (or SP) <p>State:</p> <ul style="list-style-type: none"> - client registered <p>Continuation of / Can be tested at the same time as:</p> <ul style="list-style-type: none"> - <p>Prerequisite for this test:</p> <ul style="list-style-type: none"> - DPE-1.0-int-001
Test Procedure	<p>(1) SP initiates a Client ID query, with a Query-Key associated with the client registered in DPE-1.0-int-001. This initiates the message sequence (message order may vary):</p> <p>Service Provider->DPE Server: Dpe3ClientIdQuery DPE Server->Service Provider: Dpe3ClientIdResponse</p>
Pass-Criteria	<p>(1) Dpe3ClientIdResponse is received and processed by the SP without error, and identifies the correct Client ID.</p>

Table 31: DPE-1.0-int-070 DPE-3 Client ID Query

6.32 DPE-1.0-int-071 DPE-3 Client ID Report

Test Case Id	DPE-1.0-int-071
Test Object	DPE Client and DPE Server
Test Case Description	DPE-3 Schedule Policy
Specification Reference	[DPE-TS] [6.3.8]
SCR Reference	DPE-S-016-M
ETR Reference	CLID-002
Tool	TBD
Test code	TBD
Preconditions	<p>Equipment:</p> <ul style="list-style-type: none"> - client and server - server driver (or SP) <p>State:</p> <ul style="list-style-type: none"> - client registered <p>Continuation of / Can be tested at the same time as:</p> <ul style="list-style-type: none"> - <p>Prerequisite for this test:</p> <ul style="list-style-type: none"> - DPE-1.0-int-001

Test Procedure	<p>(1) SP establishes a property policy for a client, which is associated with a particular MSISDN. This initiates the message sequence: (per DPE-1.0-int-041)</p> <p>(2) The user of the device in (1) moves their SIM to another device. The new client registers with the server, and is assigned a Client ID. As the Client ID associated to the user's MSISDN has changed, this initiates the message: DPE Server->Service Provider: Dpe3ClientIdReport</p>
Pass-Criteria	(1) Dpe3ClientIdReport is received and processed by the SP without error, and identifies the new Client ID.

Table 32: DPE-1.0-int-071 DPE-3 Client ID Report

6.33 DPE-1.0-int-080 DPE-1 commands in HTTP responses

Test Case Id	DPE-1.0-int-080
Test Object	DPE Client and DPE Server
Test Case Description	DPE-1 commands in HTTP responses
Specification Reference	[DPE-TS] [7.2]
SCR Reference	DPE-C-011-M DPE-S-019-M
ETR Reference	BEAR-001
Tool	TBD
Test code	TBD
Preconditions	<p>Equipment:</p> <ul style="list-style-type: none"> - client and server <p>State:</p> <ul style="list-style-type: none"> - client registered <p>Continuation of / Can be tested at the same time as:</p> <ul style="list-style-type: none"> - <p>Prerequisite for this test:</p> <ul style="list-style-type: none"> - DPE-1.0-int-001 - DPE-1.0-int-002 - DPE-1.0-int-012 - DPE-1.0-int-031

Test Procedure	<p>Note: this is a hypothetical procedure which illustrates one possible case for the embedding of DPE-1 commands in DPE-2 responses. An alternate test scenario may be used, as supported by the server.</p> <p>(1) An Exact-Match policy is established as in DPE-1.0-int-031. After the policy is set, the client's registration is invalidated in the server, to simulate an error condition (invalid Client ID) and force re-registration at the next message from the client.</p> <p>(2) The matched value is reported by the client as described in DPE-1.0-int-031. The server responds to the property report with a 200 OK and includes a Dpe1RegisterCommand message in the HTTP response. This result in the message sequence:</p> <p>DPE Client->DPE Server: Dpe1RegisterRequest DPE Server->DPE Client: Dpe1RegisterResponse DPE Client->DPE Server: Dpe1RegisterAck</p>
Pass-Criteria	(1) The registration process succeeds.

Table 33: DPE-1.0-int-080 DPE-1 commands in HTTP responses

6.34 DPE-1.0-int-081 DPE-2 commands in HTTP responses

Test Case Id	DPE-1.0-int-081
Test Object	DPE Client and DPE Server
Test Case Description	DPE-2 commands in HTTP responses
Specification Reference	[DPE-TS] [7.2]
SCR Reference	DPE-C-011-M DPE-S-019-M
ETR Reference	BEAR-002
Tool	TBD
Test code	TBD
Preconditions	<p>Equipment:</p> <ul style="list-style-type: none"> - client and server <p>State:</p> <ul style="list-style-type: none"> - client registered <p>Continuation of / Can be tested at the same time as:</p> <ul style="list-style-type: none"> - <p>Prerequisite for this test:</p> <ul style="list-style-type: none"> - DPE-1.0-int-001 - DPE-1.0-int-012 - DPE-1.0-int-031

Test Procedure	<p>Note: this is a hypothetical procedure which illustrates one possible case for the embedding of DPE-2 commands in DPE-2 responses. An alternate test scenario may be used, as supported by the server.</p> <p>(1) An Exact-Match policy is established as in DPE-1.0-int-031. The server is configured to release the policy after the first report.</p> <p>(2) The matched value is reported by the client as described in DPE-1.0-int-031. The server responds to the property report with a 200 OK and includes a Dpe2PolicyRelease message in the HTTP response. This result in the client response:</p> <p>DPE Client->DPE Server: Dpe2PolicyAck</p>
Pass-Criteria	(1) The Dpe2PolicyRelease is received and processed by the client without error, and the policy is removed as expected.

Table 34: DPE-1.0-int-081 DPE-2 commands in HTTP responses

Appendix A. Change History (Informative)

A.1 Approved Version History

Reference	Date	Description
n/a	n/a	No prior version –or- No previous version within OMA

A.2 Draft/Candidate Version 1.0 History

Document Identifier	Date	Sections	Description
OMA-ETS-DPE-V1_0	06 Aug 2009	All	Initial document to address the basic starting point
	01 Jun 2010	6, 4	Incorporated CR: - OMA-IOP-BRO-2010-0030-CR_DPE_ETS_Review_Updates
Candidate Version OMA-ETS-DPE-V1_0	29 Jun 2010	n/a	Status changed to Candidate by TP OMA-TP-2010-0246-INP_DPE_10_ETS_for_Candidate_Approval

