



Enabler Validation Plan for Smartcard-Web-Server

Candidate Version 1.2 – 11 Oct 2011

Open Mobile Alliance
OMA-EVP-Smartcard_Web_Server-V1_2-20111011-C

Use of this document is subject to all of the terms and conditions of the Use Agreement located at <http://www.openmobilealliance.org/UseAgreement.html>.

Unless this document is clearly designated as an approved specification, this document is a work in process, is not an approved Open Mobile Alliance™ specification, and is subject to revision or removal without notice.

You may use this document or any part of the document for internal or educational purposes only, provided you do not modify, edit or take out of context the information in this document in any manner. Information contained in this document may be used, at your sole risk, for any purposes. You may not use this document in any other manner without the prior written permission of the Open Mobile Alliance. The Open Mobile Alliance authorizes you to copy this document, provided that you retain all copyright and other proprietary notices contained in the original materials on any copies of the materials and that you comply strictly with these terms. This copyright permission does not constitute an endorsement of the products or services. The Open Mobile Alliance assumes no responsibility for errors or omissions in this document.

Each Open Mobile Alliance member has agreed to use reasonable endeavors to inform the Open Mobile Alliance in a timely manner of Essential IPR as it becomes aware that the Essential IPR is related to the prepared or published specification. However, the members do not have an obligation to conduct IPR searches. The declared Essential IPR is publicly available to members and non-members of the Open Mobile Alliance and may be found on the “OMA IPR Declarations” list at <http://www.openmobilealliance.org/ipr.html>. The Open Mobile Alliance has not conducted an independent IPR review of this document and the information contained herein, and makes no representations or warranties regarding third party IPR, including without limitation patents, copyrights or trade secret rights. This document may contain inventions for which you must obtain licenses from third parties before making, using or selling the inventions. Defined terms above are set forth in the schedule to the Open Mobile Alliance Application Form.

NO REPRESENTATIONS OR WARRANTIES (WHETHER EXPRESS OR IMPLIED) ARE MADE BY THE OPEN MOBILE ALLIANCE OR ANY OPEN MOBILE ALLIANCE MEMBER OR ITS AFFILIATES REGARDING ANY OF THE IPR'S REPRESENTED ON THE “OMA IPR DECLARATIONS” LIST, INCLUDING, BUT NOT LIMITED TO THE ACCURACY, COMPLETENESS, VALIDITY OR RELEVANCE OF THE INFORMATION OR WHETHER OR NOT SUCH RIGHTS ARE ESSENTIAL OR NON-ESSENTIAL.

THE OPEN MOBILE ALLIANCE IS NOT LIABLE FOR AND HEREBY DISCLAIMS ANY DIRECT, INDIRECT, PUNITIVE, SPECIAL, INCIDENTAL, CONSEQUENTIAL, OR EXEMPLARY DAMAGES ARISING OUT OF OR IN CONNECTION WITH THE USE OF DOCUMENTS AND THE INFORMATION CONTAINED IN THE DOCUMENTS.

© 2011 Open Mobile Alliance Ltd. All Rights Reserved.

Used with the permission of the Open Mobile Alliance Ltd. under the terms set forth above.

Contents

| | |
|---|-----------|
| 1. SCOPE | 5 |
| 1.1 ASSUMPTIONS | 5 |
| 1.2 EXCLUSIONS | 5 |
| 2. REFERENCES | 6 |
| 2.1 NORMATIVE REFERENCES | 6 |
| 2.2 INFORMATIVE REFERENCES | 7 |
| 3. TERMINOLOGY AND CONVENTIONS | 8 |
| 3.1 CONVENTIONS | 8 |
| 3.2 DEFINITIONS | 8 |
| 3.3 ABBREVIATIONS | 9 |
| 4. ENABLER VALIDATION DESCRIPTION | 10 |
| 5. TESTFEST ACTIVITIES | 11 |
| 5.1 ENABLER TEST GUIDELINES | 11 |
| 5.1.1 Minimal Test Configuration..... | 11 |
| 5.1.2 Minimal Participation Guidelines | 11 |
| 5.1.3 Optimal TestFest Achievement Test Case Priority Guidelines..... | 11 |
| 5.2 ENABLER TEST REQUIREMENTS | 12 |
| 5.2.1 Test Infrastructure Requirements | 12 |
| 5.2.2 Enabler Execution Flow | 13 |
| 5.2.3 Test Content Requirements | 16 |
| 5.2.4 Test Limitations | 17 |
| 5.2.5 Test Restrictions..... | 17 |
| 5.2.6 Test Tools | 17 |
| 5.2.7 Resources Required | 17 |
| 5.3 TESTS TO BE PERFORMED | 17 |
| 5.3.1 Entry Criteria for TestFest | 17 |
| 5.3.2 Testing to be Performed at TestFest..... | 18 |
| 5.4 ENABLER TEST REPORTING | 19 |
| 5.4.1 Problem Reporting Requirements | 19 |
| 5.4.2 Enabler Test Requirements | 19 |
| 6. ALTERNATIVE VALIDATION ACTIVITIES | 21 |
| 7. APPROVAL CRITERIA | 22 |
| 7.1 ENABLER VALIDATION TEST CASES | 22 |
| 7.2 NON-COVERED ETR REQUIREMENTS | 36 |
| APPENDIX A. CHANGE HISTORY (INFORMATIVE) | 38 |
| A.1 APPROVED VERSION HISTORY | 38 |
| A.2 DRAFT/CANDIDATE VERSION 1.2 HISTORY | 38 |

Figures

| | |
|--|-----------|
| Figure 1: Example Browsing Flow | 13 |
| Figure 2: Example Full Administration Flow | 14 |
| Figure 3: Example Lightweight Administration Flow | 15 |

Tables

Table 1: Listing of Tests for Entry Criteria for TestFest 18

Table 2: Listing of Tests to be Performed at TestFest 19

Table 3: Enabler Validation Test Cases..... 36

Table 4: Non-Covered ETR Requirements 37

1. Scope

This document details the Validation plan for the Smartcard Web Server 1.2 Enabler Release. The successful accomplishment of the validation activities will be required for the Enabler to be considered for Approved status.

The validation plan for the Smartcard Web Server 1.2 Enabler Release specifications is based on testing expectations in the Enabler Test Requirements (ETR). While the specific test activities to be performed are described in the Enabler Test Specification (ETS) the test environment is described in this plan. This test environment details infrastructure, operational and participation requirements identified for the needed testing activities.

1.1 Assumptions

None

1.2 Exclusions

None

2. References

2.1 Normative References

- [3GPP TS 11.14] “TS 11.14 3rd Generation Partnership Project; Specification of the SIM Application Toolkit for the Subscriber Identity Module - Mobile Equipment(SIM - ME) interface
URL: http://www.3gpp.org/ftp/Specs/archive/11_series/11.14/
- [3GPP TS 31.102] “TS 31.102 Technical Specification Smart Cards; Characteristics of the Universal Subscriber Identity Module (USIM) application”, 3rd Generation Partnership Project (3GPP),
URL: http://www.3gpp.org/ftp/Specs/archive/31_series/31.102/
- [3GPP TS 31.103] “TS 31.103 Technical Specification Group Core Network and Terminals; Characteristics of the IP Multimedia Services Identity Module (ISIM) application”, 3rd Generation Partnership Project (3GPP),
URL: http://www.3gpp.org/ftp/Specs/archive/31_series/31.103/
- [3GPP TS 51.011] “TS 51.011 Technical Specification Group Terminals; Specification of the Subscriber Identity Module-Mobile Equipment (SIM - ME) interface”, 3rd Generation Partnership Project (3GPP),
URL: http://www.3gpp.org/ftp/Specs/archive/51_series/51.011/
- [3GPP2 C.S0023] “Removable User Identity Module for Spread Spectrum Systems”, 3rd Generation Partnership Project 2 (3GPP2), Technical Specification 3GPP2 C.S0023,
URL: <http://www.3gpp2.org/>
- [ETSI TR 102 216] “TR 102 216 Technical Report Smart Cards; Vocabulary for Smart Card Platform specifications”, v3.0.0, European Telecommunications Standards Institute (ETSI),
URL: <http://www.etsi.org>
- [ETSI TS 102 223] “TS 102 223 Technical Specification Smart cards; Card Application Toolkit (CAT)”, R7 or higher, URL: <http://www.etsi.org>
- [ETSI TS 102 483] “TS 102 483 Technical Specification Smart Cards; UICC-Terminal interface; Internet Protocol connectivity between UICC and terminal” R7 or higher, European Telecommunications Standards Institute (ETSI),
URL: <http://www.etsi.org>
- [ETSI TS 102 600] “TS 102 600 Technical Specification Smart Cards; UICC-Terminal interface; Characteristics of the USB interface” R7 or higher, European Telecommunications Standards Institute (ETSI),
URL: <http://www.etsi.org>
- [IOPPROC] “OMA Interoperability Policy and Process”, Version 18, Open Mobile Alliance™, OMA-ORG-IOP_Process-V1_8, [URL:http://www.openmobilealliance.org/](http://www.openmobilealliance.org/)
- [ProvSC] “Provisioning Smart Card Specification” part of the “Client Provisioning Enabler Version 1.1”, Open Mobile Alliance™, OMA-WAP-TS-ProvSC-V1_1-20090728-A,
URL: <http://www.openmobilealliance.org/>
- [RFC1630] “Universal Resource Identifiers in WWW: A Unifying Syntax for the Expression of Names and Addresses of Objects on the Network as used in the World-Wide Web”, RFC1630,
URL: <http://www.ietf.org/rfc/rfc1630.txt>
- [RFC2119] “Key words for use in RFCs to Indicate Requirement Levels”, S. Bradner, March 1997,
[URL:http://www.ietf.org/rfc/rfc2119.txt](http://www.ietf.org/rfc/rfc2119.txt)
- [SCWS-AD] “SCWS Architecture”, Version 1.2, Open Mobile Alliance™, OMA-AD-Smartcard_Web_Server-V1_2, URL: <http://www.openmobilealliance.org/>
- [SCWS-EICS-AD] ‘Enabler Implementation Conformance Statement Admin Server Implementation of Smartcard-

Web-Server' Version 1.2 Open Mobile Alliance™, OMA-EICS-Smartcard_Web_Server_AdminServer-V1_2, URL: <http://www.openmobilealliance.org/>

[SCWS-EICS-D] 'Enabler Implementation Conformance Statement Device Implementation of Smartcard-Web-Server', Version 1.2, Open Mobile Alliance™, OMA-EICS-Smartcard_Web_Server_Device-V1_2, URL: <http://www.openmobilealliance.org/>

[SCWS-EICS-SC] 'Enabler Implementation Conformance Statement Smartcard Implementation of Smartcard-Web-Server', Version 1.2, Open Mobile Alliance™, OMA-EICS-Smartcard_Web_Server_Smartcard-V1_2, URL: <http://www.openmobilealliance.org/>

[SCWS-ETR] 'SCWS Enabler Test Requirements' Version 1.2, Open Mobile Alliance™,, OMA-ETR-Smartcard_Web_Server-V1_2, URL: <http://www.openmobilealliance.org/>

[SCWS-ETS] 'SCWS Enabler Test Specification' Version 1.2, Open Mobile Alliance™,, OMA-ETS-Smartcard_Web_Server-V1_2, URL: <http://www.openmobilealliance.org/>

[SCWS-RD] "SCWS Requirements", Version 1.2, Open Mobile Alliance™,, OMA-RD_Smartcard_Web_Server-V1_2, URL: <http://www.openmobilealliance.org/>

[SCWS-TS] "SCWS Technical Specification", Version 1.2, Open Mobile Alliance™,, OMA-TS-Smartcard-Web-Server-V1_2, URL: <http://www.openmobilealliance.org/>

2.2 Informative References

[OMADICT] "Dictionary for OMA Specifications", Version 2.6, Open Mobile Alliance™, OMA-ORG-Dictionary-V2_6, URL: <http://www.openmobilealliance.org/>

3. Terminology and Conventions

3.1 Conventions

The key words “MUST”, “MUST NOT”, “REQUIRED”, “SHALL”, “SHALL NOT”, “SHOULD”, “SHOULD NOT”, “RECOMMENDED”, “MAY”, and “OPTIONAL” in this document are to be interpreted as described in [RFC2119].

All sections and appendixes, except “Scope”, are normative, unless they are explicitly indicated to be informative.

3.2 Definitions

| | |
|--|---|
| BIP | Bearer Independent Protocol as defined in [ETSI TS 102 223] |
| Browser | A program used to view (x) HTML or other media type documents. |
| CSIM | A Cdma2000 Subscriber Identify Module is an application defined in [3GPP2 C.S0065] residing on the UICC to register services provided by 3GPP2 mobile networks with the appropriate security. |
| Device (or Terminal) | A voice and/or data terminal that uses a Wireless Bearer for data transfer. Terminal types may include (but are not limited to): mobile phones (GSM, CDMA, 3GSM, etc.), data-only terminals, PDAs, laptop computers, PCMCIA cards for data communication and unattended data-only terminals (e.g., vending machines). |
| Enabler Release | Collection of specifications that combined together form an enabler for a service area, e.g. a download enabler, a browsing enabler, a messaging enabler, a location enabler, etc. The specifications that are forming an enabler should combined fulfil a number of related market requirements. |
| HTTPS | A short term for HTTP over TLS |
| ISIM | An IP Multimedia Services Identity Module is an application defined in [3GPP TS 31.103] residing in the memory of the UICC, providing IP service identification, authentication and ability to set up Multimedia IP Services. |
| Minimum Functionality Description | Description of the guaranteed features and functionality that will be enabled by implementing the minimum mandatory part of the Enabler Release. |
| Network Operator | An entity that is licensed and allocated frequency to operate a public mobile wireless telecommunications network for the purpose of providing publicly available commercial services. |
| R-UIM | A Removable User Identity Module is a standalone module defined in [3GPP2 C.S0023] to register services provided by 3GPP2 mobile networks with the appropriate security. |
| SIM | A Subscriber Identity Module is a standalone module defined in [3GPP TS 51.011] to register services provided by 2G mobile networks with the appropriate security. |
| Smart Card | This is a portable tamper resistant device with an embedded microprocessor chip. A Smart Card is used for storing data (e.g. access codes, user subscription information, secret keys etc.) and performing typically security related operations like encryption and authentication. A Smart Card may contain one or more network authentication applications like the SIM (Subscriber Identification Module), USIM, R-UIM (Removable – User Identification Module), CSIM (CDMA SIM). In addition, the Smart Card refers to the smart card definition of [ETSI TR 102 216]. |
| Smart Card application | An application that executes in the Smart Card |
| Smart Card issuer | The entity that gives/sales the Smart Card to the user (e.g. network operator for a SIM card) |
| Smart Card Web Server | A Web server running in the Smart Card |
| UICC | UICC is the Smart Card defined for the ETSI standard [ETSI TS 102.221]. It is a platform to resident applications (e.g. USIM, CSIM or ISIM). |
| URI | Uniform Resource Identifiers (URI, see [RFC1630]) provides a simple and extensible means for identifying a resource. URI syntax is widely used to address Internet resources over the web but is also adapted to local resources over a wide variety of protocols and interfaces. |
| URL | The specification is derived from concepts introduced by the World-Wide Web global information initiative, whose use of such objects dates from 1990 and is described in "Universal Resource Identifiers in WWW", [RFC1630]. The specification of URLs (see [RFC1738]) is designed to meet the requirements |

laid out in "Functional Requirements for Internet Resource Locators".

| | |
|-------------------|--|
| User | Person who interacts with a user agent to view, hear or otherwise use a resource |
| USIM | A Universal Subscriber Identity Module is an application defined in [3GPP TS 31.102] residing in the memory of the UICC to register services provided by 3GPP mobile networks with the appropriate security. |
| Web Page | A document viewable by using a web browser or client application which is connected to the page server |
| Web server | A server process running on a processor, which sends out web pages in response to HTTP requests from browsers. |

3.3 Abbreviations

| | |
|----------------|--|
| (U)SIM | (Universal) Subscriber Identity Module |
| APDU | Application Protocol Data Units |
| CAT | Card Application Toolkit |
| CSIM | CDMA SIM |
| EEM | Ethernet Emulation Model |
| EICS | Enabler Implementation Conformance Statement |
| ERDEF | Enabler Requirement Definition |
| ERELD | Enabler Release Definition |
| IP | Internet Protocol |
| OMA | Open Mobile Alliance |
| PPS | Protocol and Parameters Selection |
| PSK-TLS | Pre-Shared Key TLS |
| R-UIM | Removable User Identity Module |
| SCWS | Smart Card Web Server |
| SMPP | Short Message Peer-to-Peer protocol |
| TCP | Transmission Control Protocol |
| TLS | Transport Layer Security |

4. Enabler Validation Description

It is intended that TestFests will be the primary validation method for Smartcard Web Server 1.2. Please refer to section 5 for further information.

5. TestFest Activities

5.1 Enabler Test Guidelines

5.1.1 Minimal Test Configuration

The requirements for testing interoperability of the Smartcard Web Server enabler are:

1. A Smart Card with SCWS implementation that includes at least the BIP transport protocol as defined below and may additionally include the TCP/IP transport protocol as defined below.
2. A Mobile Device with SCWS client implementation, that includes at least one of the following protocols:
 - BIP transport protocol:
 - Support of the Bearer Independent Protocol (BIP) as defined in [ETSI TS 102 223] release 4 & higher, class 'e' (initially standardized in 3GPP TS 11.14, class 'e', release 99).
 - Support of the BIP TCP server mode, as defined in [ETSI TS 102 223], release 7 and higher.
 - Support of at least 3 channels to enable multiple applications working with the (U)SIM card (http + https + BIP classical download).
 - TCP/IP transport protocol:
 - Support a direct TCP/IP interface between the Smart Card and the Mobile Device as defined in [ETSI TS 102 600], using the Ethernet Emulation Model (EEM) subclass.
 - Support the IP connectivity (IP address allocation, routing) as defined in [ETSI TS 102 483].
3. A Mobile Device must support the Timer Management and Timer Expiration features as defined in [ETSI TS 102 223] release 4 & higher (initially standardized in [3GPP TS 11.14], release 99)
4. A SCWS Remote Admin Server
5. The SCWS Remote Admin Server implementation SHALL provide a way to change the settings of the Remote Administration requests included in the triggering SMS as define in the chapter 13.3.2.4 of the [SCWS-TS].
6. A SMS-C supporting the protocol SMPP 3.4 or higher.

5.1.2 Minimal Participation Guidelines

Minimum

- 2 different Smart Cards with SCWS implementations
- 2 different SCWS Remote Admin Servers implementations
- 2 Device implementations.

5.1.3 Optimal TestFest Achievement Test Case Priority Guidelines

This list represents the current highest priority test cases that the participants should attempt to perform at the event. In order to facilitate maximum test coverage of the functionality of the enabler over a number of TestFests, this list may be modified by the IOP WG between test events to reflect the latest priorities. Therefore the ETS Test Cases listed below represent a subset of all the Test Cases for the Enabler that it is thought can be executed in a single test session at an OMA TestFest. It is not intended to be the only tests executed at a TestFest, and teams are encouraged to execute more tests if they are able to do so in the time allowed.

The list includes:

| Test Case Id | Special Conditions |
|-------------------|---|
| SCWS-1.2-int-001 | gif image of small size |
| SCWS-1.2-int-002 | gif image of large size |
| SCWS-1.2-int-003 | jpeg image larger than open channel buffer size |
| SCWS-1.2-int-100 | Access to server Off-line |
| SCWS-1.2-int-101 | html pages with many resources |
| SCWS-1.2-int-102 | multiple http connection |
| SCWS-1.2-int-103 | Browsing cancelled |
| SCWS-1.2-int-104 | Browsing interruption |
| SCWS-1.2-int-200 | long file name |
| SCWS-1.2-int-201 | long directory name |
| SCWS-1.2-int-202 | escaped char |
| SCWS-1.2-int-203 | query string |
| SCWS-1.2-int-204 | Uri long (1024 bytes) |
| SCWS-1.2-int-205 | Uri Not Found |
| SCWS-1.2-int-400 | Browsing session using BIP server mode protocol |
| SCWS-1.2-int-401 | Browsing session using TCP/IP protocol |
| SCWS-1.2-int-500 | single resource small size |
| SCWS-1.2-int-501 | single resource large size |
| SCWS-1.2-int-502 | multiple resources total size 32kb |
| SCWS-1.2-int-505 | resources gzipped |
| SCWS-1.2-int-506 | administration and Cache mechanism |
| SCWS-1.2-int-551 | administration session with terminal switched-off |
| SCWS-1.2-int-600 | TLS 1.0 and TLS_PSK_WITH_3DES_EDE_CBC_SHA |
| SCWS-1.2-int-601 | TLS 1.0 and TLS_PSK_WITH_AES_128_CBC_SHA |
| SCWS-1.2-int-603 | TLS 1.1 and TLS_PSK_WITH_3DES_EDE_CBC_SHA |
| SCWS-1.2-int-604 | TLS 1.1 and TLS_PSK_WITH_AES_128_CBC_SHA |
| SCWS-1.2-int-606 | TLS 1.2 and TLS_PSK_WITH_3DES_EDE_CBC_SHA |
| SCWS-1.2-int-607 | TLS 1.2 and TLS_PSK_WITH_AES_128_CBC_SHA |
| SCWS-1.2-int-609 | TLS 1.2 and TLS_PSK_WITH_AES_128_CBC_SHA256 |
| SCWS-1.2-int-800 | Admin session using BIP server mode protocol |
| SCWS-1.2-int-801 | Admin session using TCP/IP protocol |
| SCWS-1.2-int-1000 | Remote triggering using a SMS |
| SCWS-1.2-int-1001 | Remote triggering using a OMA SIP Push message |
| SCWS-1.2-int-1002 | Triggering using an internal event |
| SCWS-1.2-int-1100 | Trusted terminal application |
| SCWS-1.2-int-1101 | Untrusted terminal application |
| SCWS-1.2-int-1102 | No ACP file |

5.2 Enabler Test Requirements

5.2.1 Test Infrastructure Requirements

Test infrastructure will include Smart Card with SCWS, SCWS Admin Server, SMS-C, and Device.

5.2.2 Enabler Execution Flow

5.2.2.1 Browsing Execution Flow

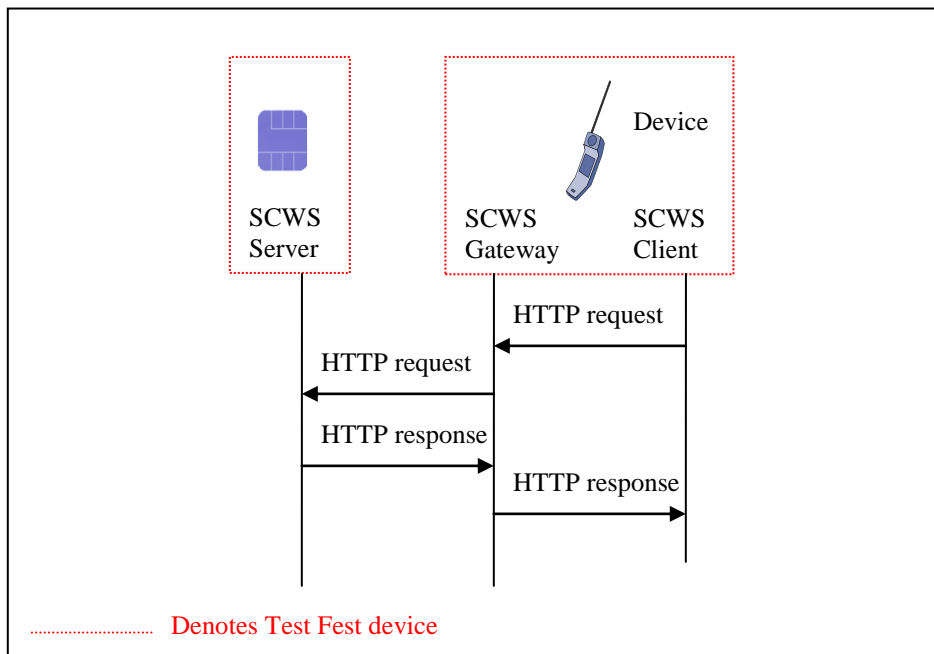


Figure 1: Example Browsing Flow

5.2.2.2 Full Administration Execution Flow

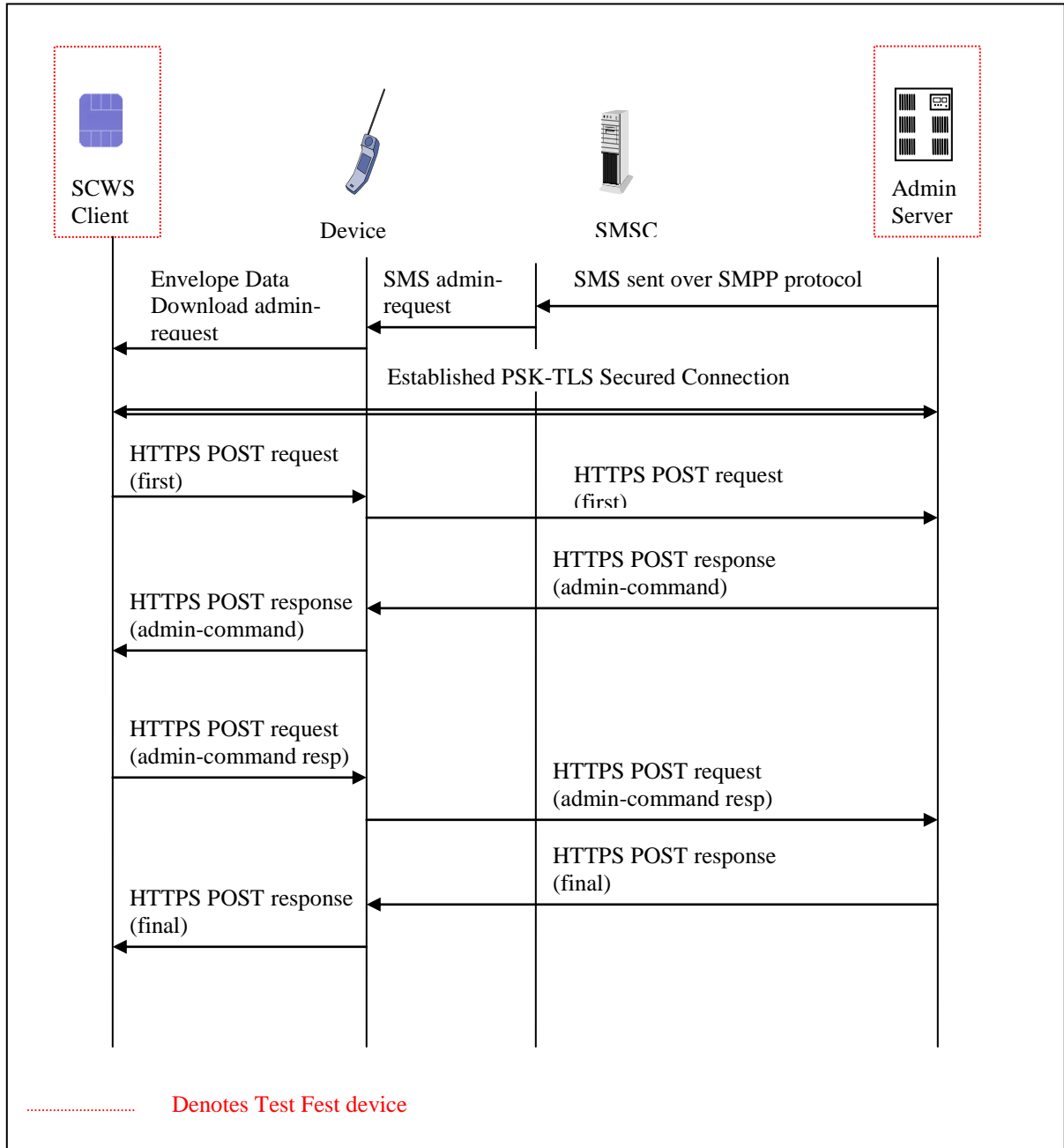


Figure 2: Example Full Administration Flow

5.2.2.3 Lightweight Administration Execution Flow

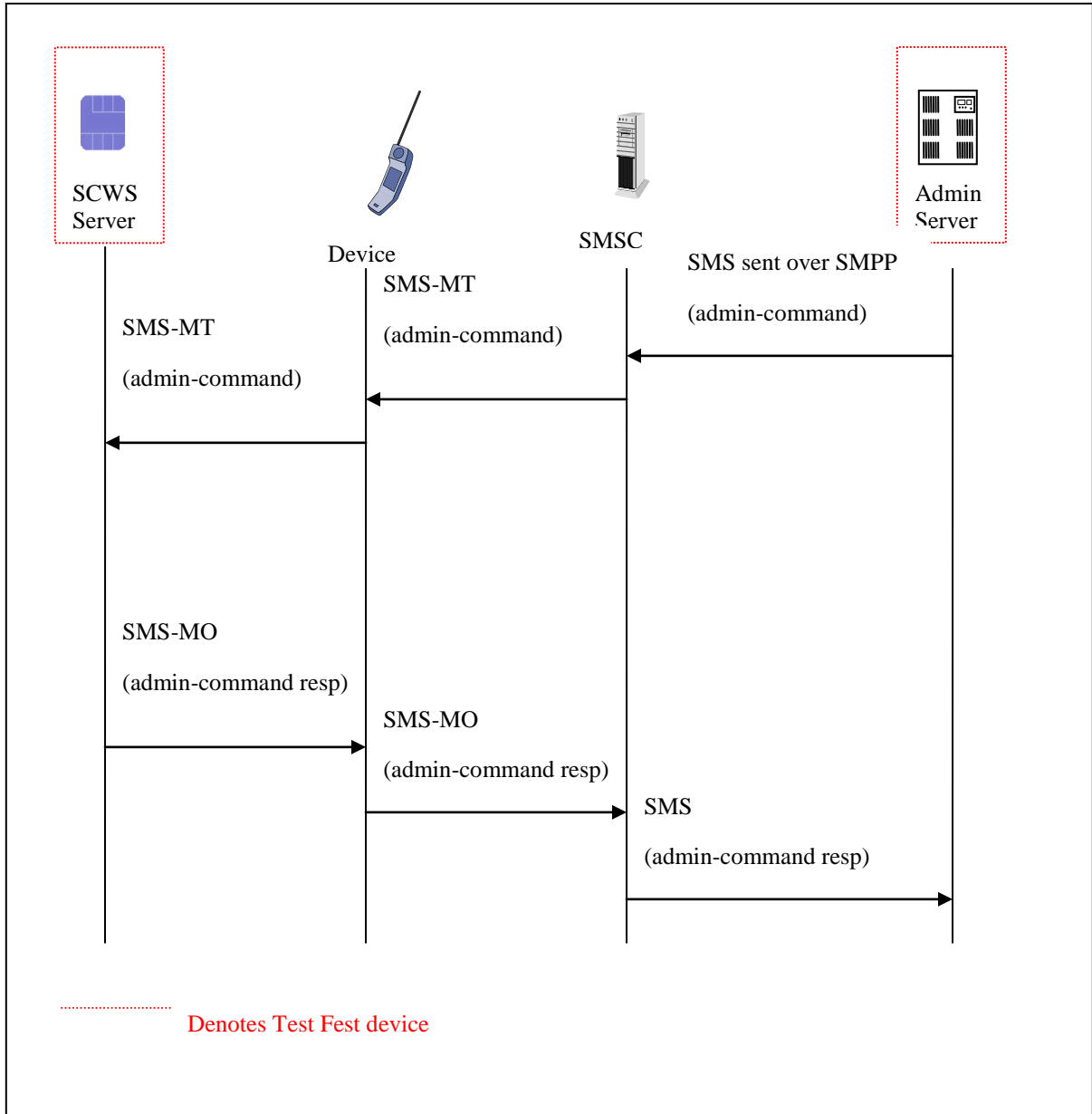
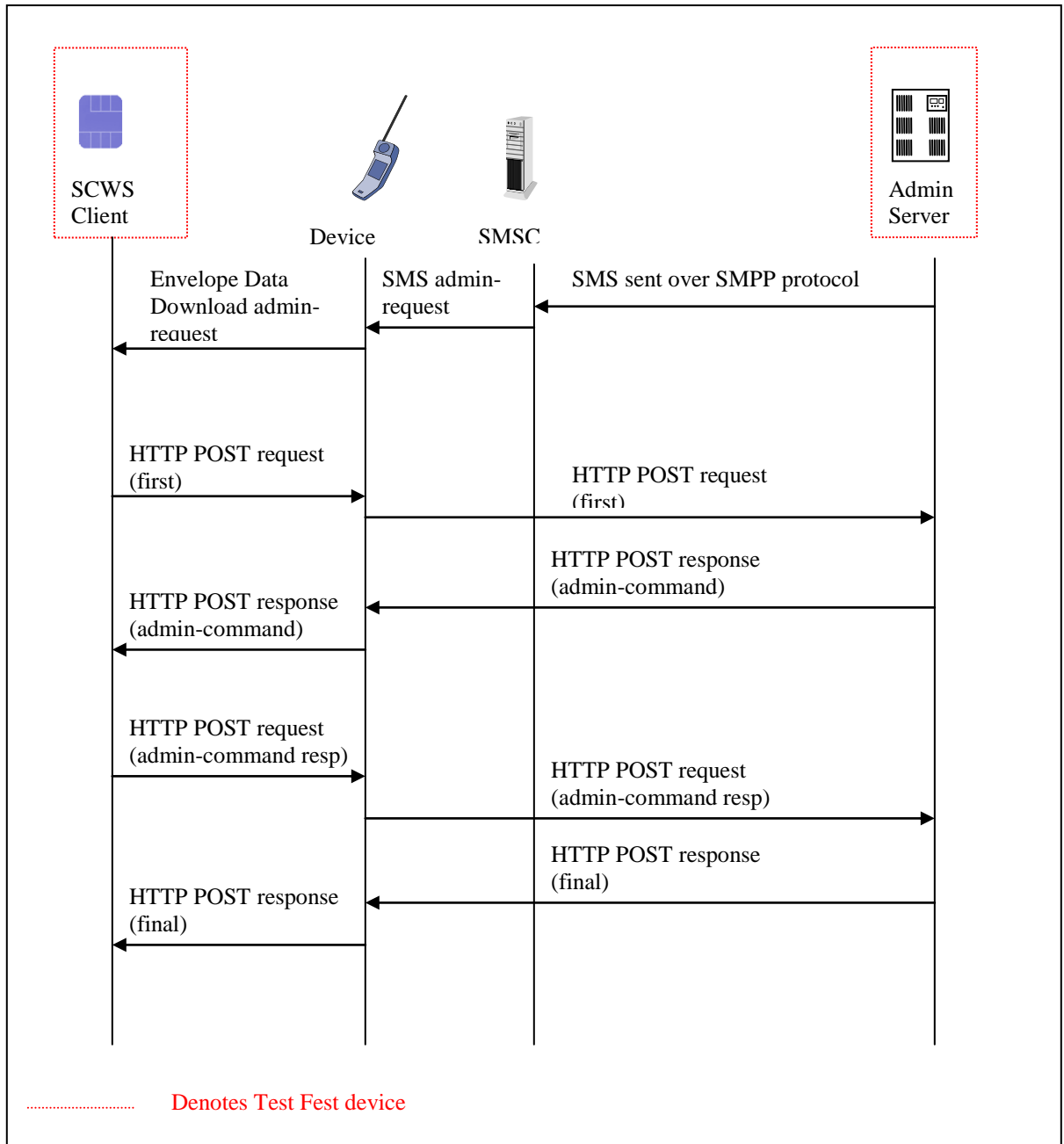


Figure 3: Example Lightweight Administration Flow

5.2.2.4 Full Administration Execution Flow for troubleshooting

For troubleshooting analyses it's recommended to be able to deactivated TLS Security:

- Smart Card Full Administration without TLS.
- Admin Server without TLS.



5.2.3 Test Content Requirements

The Smart,Card shall be personalized with html pages, as define in the ETS.

The Smart Card and the Admin Server shall be personalized to fulfil the requirement of the TestFest infrastructure (SMS-C address, TLS Pre-Shared-Key value, IP address, etc).

5.2.4 Test Limitations

5.2.4.1 Physical

None

5.2.4.2 Resources

None

5.2.5 Test Restrictions

None

5.2.6 Test Tools

No conformance test tool is available.

5.2.6.1 Existing Tools to be Used

None

5.2.6.2 Test Tool Requirements

It is necessary to have a Smart Card protocol analyser (logging the messages between the Smart Card eg SIM and Mobile Device) to allow for analysis of the SCWS protocol messages sent and received). The Smart Card or the Mobile Device providers can provide this tool.

In order to perform the tests of the different transport protocols (BIP protocol or TCP/IP protocol), if the client doesn't implement the protocol, the server can be tested using a client simulator provided by the Smart Card or the Mobile Device providers.

5.2.7 Resources Required

It is expected that Smart Card, Remote Admin Server and Device implementations have at least ONE dedicated person supporting the testing during the entire duration of a test session. This person SHOULD be familiar with the actual implementation of the enabler so that he/she can answer any pertinent questions immediately and if necessary make changes to connection setup and other implementation aspects.

If the Admin Server is tested remotely and no admin interface is available remotely, a dedicated person shall be present near the equipment to perform administration task.

5.3 Tests to be Performed

The following sections describe the tests related to the formal TestFest validation activities.

5.3.1 Entry Criteria for TestFest

The following tests need to be performed and passed by implementations by members wishing to participate in the TestFest. This ensures minimal requisite capability of the implementations. The tests are defined in the ETS [ETS-SCWS] and any special comments are noted.

| Test Case Id | Special Conditions |
|--------------|--------------------|
|--------------|--------------------|

| Test Case Id | Special Conditions |
|------------------|---|
| SCWS-1.2-int-001 | gif image of small size |
| SCWS-1.2-int-101 | html pages with many resources |
| SCWS-1.2-int-103 | Browsing cancelled |
| SCWS-1.2-int-500 | single resource small size |
| SCWS-1.2-int-502 | multiple resources total size 32kb |
| SCWS-1.2-int-600 | TLS 1.0 and TLS_PSK_WITH_3DES_EDE_CBC_SHA |

Table 1: Listing of Tests for Entry Criteria for TestFest

5.3.2 Testing to be Performed at TestFest

The following tests need to be performed to fully cover the range of capabilities of the enabler and defined protocols. These tests are to be covered in the TestFest. The tests are defined in the ETS [ETS-SCWS] and any special comments are noted.

| Test Case Id | Special Conditions |
|------------------|---|
| SCWS-1.2-int-001 | gif image of small size |
| SCWS-1.2-int-002 | gif image of large size |
| SCWS-1.2-int-003 | jpeg image larger than open channel buffer size |
| SCWS-1.2-int-004 | midi file larger than 32Kb |
| SCWS-1.2-int-005 | jpeg file of very big size |
| SCWS-1.2-int-100 | Access to server Off-line |
| SCWS-1.2-int-101 | html pages with many resources |
| SCWS-1.2-int-102 | multiple http connection |
| SCWS-1.2-int-103 | Browsing cancelled |
| SCWS-1.2-int-104 | Browsing interruption |
| SCWS-1.2-int-105 | Browsing and server administration |
| SCWS-1.2-int-106 | CAT applications concurrency |
| SCWS-1.2-int-107 | GET_WITH_ENVELOPE |
| SCWS-1.2-int-108 | Browsing and CAT DISPLAY-TEXT user-confirmation |
| SCWS-1.2-int-200 | long file name |
| SCWS-1.2-int-201 | long directory name |
| SCWS-1.2-int-202 | escaped char |
| SCWS-1.2-int-203 | query string |
| SCWS-1.2-int-204 | Uri long (1024 bytes) |
| SCWS-1.2-int-205 | Uri Not Found |
| SCWS-1.2-int-206 | 5 directory levels |
| SCWS-1.2-int-207 | default path |
| SCWS-1.2-int-250 | http basic authentication |
| SCWS-1.2-int-251 | admin protection |
| SCWS-1.2-int-300 | form post method |
| SCWS-1.2-int-301 | form get method |
| SCWS-1.2-int-302 | post unexistent ressource |
| SCWS-1.2-int-303 | chuncked response |
| SCWS-1.2-int-304 | form get method with special char in query string |
| SCWS-1.2-int-400 | Browsing session using BIP server mode protocol |
| SCWS-1.2-int-401 | Browsing session using TCP/IP protocol |
| SCWS-1.2-int-500 | single resource small size |
| SCWS-1.2-int-501 | single resource large size |

| Test Case Id | Special Conditions |
|-------------------|--|
| SCWS-1.2-int-502 | multiple resources total size 32kb |
| SCWS-1.2-int-503 | multiple resources total size 100kb |
| SCWS-1.2-int-504 | directory deletion |
| SCWS-1.2-int-505 | resources gzipped |
| SCWS-1.2-int-506 | administration and Cache mechanism |
| SCWS-1.2-int-507 | authorized entities |
| SCWS-1.2-int-508 | memory full |
| SCWS-1.2-int-551 | administration session with terminal switched-off |
| SCWS-1.2-int-552 | administration session with network coverage loss |
| SCWS-1.2-int-553 | administration session is abandoned |
| SCWS-1.2-int-554 | administration session and browsing |
| SCWS-1.2-int-555 | admin session and other CAT application |
| SCWS-1.2-int-556 | PUT_WITH_ENVELOPE |
| SCWS-1.2-int-600 | TLS 1.0 and TLS_PSK_WITH_3DES_EDE_CBC_SHA |
| SCWS-1.2-int-601 | TLS 1.0 and TLS_PSK_WITH_AES_128_CBC_SHA |
| SCWS-1.2-int-602 | TLS 1.0 and TLS_PSK_WITH_NULL_SHA |
| SCWS-1.2-int-603 | TLS 1.1 and TLS_PSK_WITH_3DES_EDE_CBC_SHA |
| SCWS-1.2-int-604 | TLS 1.1 and TLS_PSK_WITH_AES_128_CBC_SHA |
| SCWS-1.2-int-605 | TLS 1.1 and TLS_PSK_WITH_NULL_SHA |
| SCWS-1.2-int-606 | TLS 1.2 and TLS_PSK_WITH_3DES_EDE_CBC_SHA |
| SCWS-1.2-int-607 | TLS 1.2 and TLS_PSK_WITH_AES_128_CBC_SHA |
| SCWS-1.2-int-608 | TLS 1.2 and TLS_PSK_WITH_NULL_SHA |
| SCWS-1.2-int-609 | TLS 1.2 and TLS_PSK_WITH_AES_128_CBC_SHA256 |
| SCWS-1.2-int-610 | TLS 1.2 and TLS_PSK_WITH_NULL_SHA256 |
| SCWS-1.2-int-701 | LIGHTWEIGHT and deactivation of the SCWS application |
| SCWS-1.2-int-800 | Admin session using BIP server mode protocol |
| SCWS-1.2-int-801 | Admin session using TCP/IP protocol |
| SCWS-1.2-int-900 | back RemoteAdmin1.0 / AdminClient 1.1 |
| SCWS-1.2-int-901 | back RemoteAdmin1.1 / AdminClient 1.0 |
| SCWS-1.2-int-1000 | Remote triggering using a SMS |
| SCWS-1.2-int-1001 | Remote triggering using a OMA SIP Push message |
| SCWS-1.2-int-1002 | Triggering using an internal event |
| SCWS-1.2-int-1100 | Trusted terminal application |
| SCWS-1.2-int-1101 | Untrusted terminal application |
| SCWS-1.2-int-1102 | No ACP file |

Table 2: Listing of Tests to be Performed at TestFest

5.4 Enabler Test Reporting

5.4.1 Problem Reporting Requirements

Normal reporting, no special reporting required.

5.4.2 Enabler Test Requirements

Normal reporting, no special reporting required.

6. Alternative Validation Activities

No alternative validation activities are specified.

7. Approval Criteria

The SCWS 1.2 Enabler can be put in the Approved state when:

- The Enabler has been tested successfully at at least one Test Fest or
- 2 Smart Card companies have successfully run bilateral tests against, at least, two Mobile Device implementations and two Remote Admin Servers, and have reported results and any issues to OMA , and
- No open PRs exist.

7.1 Enabler Validation Test Cases

The following table should list the set of tests that are used for enabler validation.

| Test Case Id | ETR Requirement Id | ETR Status | Notes |
|--|--------------------|------------|-------|
| SCWS-1.2-int-001, SCWS-1.2-int-002, SCWS-1.2-int-003, SCWS-1.2-int-004, SCWS-1.2-int-005, SCWS-1.2-int-100, SCWS-1.2-int-101 | C_M_01 | M | |
| | S_M_01 | M | |
| | S_M_03 | M | |
| | S_M_05 | M | |
| | S_M_06 | M | |
| | D_M_01 | M | |
| | D_O_01 | O | |
| | SCWS-1.2-int-102 | C_M_01 | M |
| S_M_01 | | M | |
| S_M_03 | | M | |
| S_M_05 | | M | |
| S_M_06 | | M | |
| D_M_01 | | M | |
| D_O_01 | | O | |
| D_M_02 | | M | |
| SCWS-1.2-int-103, SCWS-1.2-int-104, SCWS-1.2-int-105 | C_M_01 | M | |
| | S_M_01 | M | |
| | S_M_03 | M | |
| | S_M_05 | M | |
| | S_M_06 | M | |
| | D_M_01 | M | |
| | D_O_01 | O | |
| SCWS-1.2-int-106 | C_M_01 | M | |
| | S_M_01 | M | |
| | S_M_03 | M | |
| | S_M_04 | M | |
| | S_M_05 | M | |
| | S_M_06 | M | |
| | D_M_01 | M | |
| | D_O_01 | O | |

| Test Case Id | ETR Requirement Id | ETR Status | Notes |
|---|--------------------|------------|-------|
| SCWS-1.2-int-107, SCWS-1.2-int-108 | ADM_C_M_01 | M | |
| | ADM_C_M_02 | M | |
| | ADM_C_M_03 | M | |
| | ADM_C_M_06 | M | |
| | ADM_S_M_01 | M | |
| | ADM_S_M_03 | M | |
| | S_M_13 | M | |
| SCWS-1.2-int-200, SCWS-1.2-int-201, SCWS-1.2-int-202, SCWS-1.2-int-203, SCWS-1.2-int-204, SCWS-1.2-int-205, SCWS-1.2-int-206, SCWS-1.2-int-207 | C_M_01 | M | |
| | S_M_01 | M | |
| | S_M_03 | M | |
| | S_M_04 | M | |
| | S_M_05 | M | |
| | S_M_06 | M | |
| | D_M_01 | M | |
| | D_O_01 | O | |
| SCWS-1.2-int-250 | C_M_01 | M | |
| | S_M_01 | M | |
| | S_M_03 | M | |
| | S_M_05 | M | |
| | S_M_06 | M | |
| | S_M_09 | M | |
| | S_M_10 | M | |
| | S_M_11 | M | |
| | D_M_01 | M | |
| | D_O_01 | O | |
| | C_O_03 | O | |
| SCWS-1.2-int-251 | C_M_01 | M | |
| | S_M_01 | M | |
| | S_M_03 | M | |
| | S_M_05 | M | |
| | S_M_06 | M | |
| | D_M_01 | M | |
| | D_O_01 | O | |
| SCWS-1.2-int-300 | C_M_01 | M | |
| | S_M_01 | M | |
| | S_M_02 | M | |
| | S_M_03 | M | |
| | S_M_05 | M | |
| | S_M_06 | M | |
| | S_M_08 | M | |
| | D_M_01 | M | |
| | D_O_01 | O | |
| SCWS-1.2-int-301 | C_M_01 | M | |
| | S_M_01 | M | |
| | S_M_02 | M | |

| Test Case Id | ETR Requirement Id | ETR Status | Notes |
|------------------|--------------------|------------|-------|
| | S_M_03 | M | |
| | S_M_05 | M | |
| | S_M_06 | M | |
| | D_M_01 | M | |
| | D_O_01 | O | |
| SCWS-1.2-int-302 | C_M_01 | M | |
| | S_M_01 | M | |
| | S_M_03 | M | |
| | S_M_05 | M | |
| | S_M_06 | M | |
| | S_M_08 | M | |
| | D_M_01 | M | |
| D_O_01 | O | | |
| SCWS-1.2-int-303 | C_M_01 | M | |
| | S_M_01 | M | |
| | S_M_02 | M | |
| | S_M_03 | M | |
| | S_M_05 | M | |
| | S_M_06 | M | |
| | S_M_08 | M | |
| | D_M_01 | M | |
| D_O_01 | O | | |
| SCWS-1.2-int-304 | C_M_01 | M | |
| | S_M_01 | M | |
| | S_M_02 | M | |
| | S_M_03 | M | |
| | S_M_05 | M | |
| | S_M_06 | M | |
| | D_M_01 | M | |
| | D_O_01 | O | |
| SCWS-1.2-int-305 | C_M_01 | M | |
| | S_M_01 | M | |
| | S_M_02 | M | |
| | S_M_03 | M | |
| | S_M_05 | M | |
| | S_M_06 | M | |
| | S_M_08 | M | |
| | D_M_01 | M | |
| D_O_01 | O | | |
| SCWS-1.2-int-400 | C_M_01 | M | |
| | S_M_01 | M | |
| | S_M_03 | M | |
| | S_M_05 | M | |
| | S_M_06 | M | |
| | S_M_24 | M | |

| Test Case Id | ETR Requirement Id | ETR Status | Notes |
|------------------|---------------------------------------|------------|-------|
| | D_M_01 | M | |
| | D_M_02 | M | |
| | D_O_01 | O | |
| SCWS-1.2-int-401 | C_M_01 | M | |
| | S_M_01 | M | |
| | S_M_03 | M | |
| | S_M_05 | M | |
| | S_M_06 | M | |
| | S_M_25 | M | |
| | D_M_01 | M | |
| | D_M_04 | M | |
| | SCWS-1.2-int-500, SCWS-1.2-int-501 | ADM_C_M_01 | M |
| ADM_C_M_02 | | M | |
| ADM_C_M_03 | | M | |
| ADM_C_M_06 | | M | |
| ADM_C_M_07 | | M | |
| ADM_C_M_08 | | M | |
| ADM_C_M_11 | | M | |
| ADM_S_M_01 | | M | |
| ADM_S_M_03 | | M | |
| ADM_S_M_07 | | M | |
| ADM_S_M_08 | | M | |
| S_M_05 | | M | |
| S_M_12 | | M | |
| S_M_13 | | M | |
| S_M_17 | | M | |
| D_M_01 | | M | |
| SCWS-1.2-int-502 | | ADM_C_M_01 | M |
| | ADM_C_M_02 | M | |
| | ADM_C_M_03 | M | |
| | ADM_C_M_06 | M | |
| | ADM_C_M_07 | M | |
| | ADM_C_M_08 | M | |
| | ADM_C_M_11 | M | |
| | ADM_S_M_01 | M | |
| | ADM_S_M_03 | M | |
| | ADM_S_M_07 | M | |
| | ADM_S_M_08 | M | |
| | S_M_05 | M | |
| | S_M_12 | M | |
| | S_M_13 | M | |
| | S_M_17 | M | |
| | S_O_10 | O | |
| | D_M_01 | M | |
| SCWS-1.2-int-503 | ADM_C_M_01 | M | |

| Test Case Id | ETR Requirement Id | ETR Status | Notes |
|------------------|--------------------|------------|-------|
| | ADM_C_M_02 | M | |
| | ADM_C_M_03 | M | |
| | ADM_C_M_06 | M | |
| | ADM_C_M_07 | M | |
| | ADM_C_M_08 | M | |
| | ADM_C_M_11 | M | |
| | ADM_S_M_01 | M | |
| | ADM_S_M_03 | M | |
| | ADM_S_M_07 | M | |
| | ADM_S_M_08 | M | |
| | S_M_05 | M | |
| | S_M_12 | M | |
| | S_M_13 | M | |
| | S_M_17 | M | |
| | D_M_01 | M | |
| SCWS-1.2-int-504 | ADM_C_M_01 | M | |
| | ADM_C_M_02 | M | |
| | ADM_C_M_03 | M | |
| | ADM_C_M_06 | M | |
| | ADM_C_M_07 | M | |
| | ADM_C_M_08 | M | |
| | ADM_C_M_11 | M | |
| | ADM_S_M_01 | M | |
| | ADM_S_M_03 | M | |
| | ADM_S_M_07 | M | |
| | ADM_S_M_08 | M | |
| | S_M_05 | M | |
| | S_M_12 | M | |
| | S_M_13 | M | |
| | S_M_17 | M | |
| S_M_19 | M | | |
| D_M_01 | M | | |
| SCWS-1.2-int-505 | ADM_C_M_01 | M | |
| | ADM_C_M_02 | M | |
| | ADM_C_M_03 | M | |
| | ADM_C_M_06 | M | |
| | ADM_C_M_07 | M | |
| | ADM_C_M_08 | M | |
| | ADM_C_M_11 | M | |
| | ADM_S_M_01 | M | |
| | ADM_S_M_03 | M | |
| | ADM_S_M_07 | M | |
| | ADM_S_M_08 | M | |
| | S_M_05 | M | |
| | S_M_12 | M | |

| Test Case Id | ETR Requirement Id | ETR Status | Notes |
|---------------------------------------|--------------------|------------|-------|
| | S_M_13 | M | |
| | S_M_17 | M | |
| | S_M_21 | M | |
| | C_M_04 | M | |
| | D_M_01 | M | |
| SCWS-1.2-int-506 | S_M_20 | M | |
| | S_M_22 | M | |
| | C_M_02 | M | |
| | C_M_03 | M | |
| SCWS-1.2-int-507 | ADM_C_M_01 | M | |
| | ADM_C_M_02 | M | |
| | ADM_C_M_03 | M | |
| | ADM_C_M_06 | M | |
| | ADM_C_M_07 | M | |
| | ADM_C_M_08 | M | |
| | ADM_C_M_11 | M | |
| | ADM_S_M_01 | M | |
| | ADM_S_M_03 | M | |
| | ADM_S_M_07 | M | |
| | ADM_S_M_08 | M | |
| | S_M_05 | M | |
| | S_M_12 | M | |
| | S_M_13 | M | |
| | S_M_17 | M | |
| | S_M_23 | M | |
| | D_M_01 | M | |
| SCWS-1.2-int-508 | ADM_C_M_01 | M | |
| | ADM_C_M_02 | M | |
| | ADM_C_M_03 | M | |
| | ADM_C_M_06 | M | |
| | ADM_C_M_07 | M | |
| | ADM_C_M_08 | M | |
| | ADM_C_M_11 | M | |
| | ADM_S_M_01 | M | |
| | ADM_S_M_03 | M | |
| | ADM_S_M_07 | M | |
| | ADM_S_M_08 | M | |
| | S_M_05 | M | |
| | S_M_12 | M | |
| | S_M_13 | M | |
| | S_M_17 | M | |
| | S_O_10 | O | |
| D_M_01 | M | | |
| SCWS-1.2-int-551, SCWS-1.2-int-552 | ADM_C_M_01 | M | |
| | ADM_C_M_02 | M | |

| Test Case Id | ETR Requirement Id | ETR Status | Notes |
|--|--------------------|------------|-------|
| | ADM_C_M_03 | M | |
| | ADM_C_M_04 | M | |
| | ADM_C_M_06 | M | |
| | ADM_C_M_07 | M | |
| | ADM_C_M_08 | M | |
| | ADM_C_M_11 | M | |
| | ADM_S_M_01 | M | |
| | ADM_S_M_03 | M | |
| | ADM_S_M_07 | M | |
| | ADM_S_M_08 | M | |
| | S_M_05 | M | |
| | S_M_12 | M | |
| | S_M_13 | M | |
| | S_M_17 | M | |
| | D_M_01 | M | |
| SCWS-1.2-int-553 | ADM_C_M_01 | M | |
| | ADM_C_M_02 | M | |
| | ADM_C_M_03 | M | |
| | ADM_C_M_04 | M | |
| | ADM_C_M_05 | M | |
| | ADM_C_M_06 | M | |
| | ADM_C_M_07 | M | |
| | ADM_C_M_08 | M | |
| | ADM_C_M_11 | M | |
| | ADM_S_M_01 | M | |
| | ADM_S_M_03 | M | |
| | ADM_S_M_07 | M | |
| | ADM_S_M_08 | M | |
| | S_M_05 | M | |
| | S_M_12 | M | |
| S_M_13 | M | | |
| S_M_17 | M | | |
| D_M_01 | M | | |
| SCWS-1.2-int-554, SCWS-1.2-int-555, SCWS-1.2-int-556 | ADM_C_M_01 | M | |
| | ADM_C_M_02 | M | |
| | ADM_C_M_03 | M | |
| | ADM_C_M_06 | M | |
| | ADM_C_M_07 | M | |
| | ADM_C_M_08 | M | |
| | ADM_C_M_11 | M | |
| | ADM_S_M_01 | M | |
| | ADM_S_M_03 | M | |
| | ADM_S_M_07 | M | |
| | ADM_S_M_08 | M | |
| S_M_05 | M | | |

| Test Case Id | ETR Requirement Id | ETR Status | Notes |
|------------------|--------------------|------------|-------|
| | S_M_12 | M | |
| | S_M_13 | M | |
| | S_M_17 | M | |
| | D_M_01 | M | |
| SCWS-1.2-int-600 | ADM_C_M_01 | M | |
| | ADM_C_M_02 | M | |
| | ADM_C_M_03 | M | |
| | ADM_C_M_06 | M | |
| | ADM_C_M_07 | M | |
| | ADM_C_M_08 | M | |
| | ADM_C_M_08_A | M | |
| | ADM_C_M_09 | M | |
| | ADM_C_M_11 | M | |
| | ADM_S_M_01 | M | |
| | ADM_S_M_03 | M | |
| | ADM_S_M_07 | M | |
| | ADM_S_M_08 | M | |
| | ADM_S_M_06_A | M | |
| | S_M_05 | M | |
| | S_M_12 | M | |
| | S_M_13 | M | |
| | S_M_17 | M | |
| | D_M_01 | M | |
| | SCWS-1.2-int-601 | ADM_C_M_01 | M |
| ADM_C_M_02 | | M | |
| ADM_C_M_03 | | M | |
| ADM_C_M_06 | | M | |
| ADM_C_M_07 | | M | |
| ADM_C_M_08 | | M | |
| ADM_C_M_08_B | | M | |
| ADM_C_M_09 | | M | |
| ADM_C_M_11 | | M | |
| ADM_S_M_01 | | M | |
| ADM_S_M_03 | | M | |
| ADM_S_M_07 | | M | |
| ADM_S_M_08 | | M | |
| ADM_S_M_06_B | | M | |
| S_M_05 | | M | |
| S_M_12 | | M | |
| S_M_13 | | M | |
| S_M_17 | | M | |
| D_M_01 | | M | |
| SCWS-1.2-int-602 | | ADM_C_M_01 | M |
| | ADM_C_M_02 | M | |
| | ADM_C_M_03 | M | |

| Test Case Id | ETR Requirement Id | ETR Status | Notes |
|------------------|--------------------|------------|-------|
| | ADM_C_M_06 | M | |
| | ADM_C_M_07 | M | |
| | ADM_C_M_08 | M | |
| | ADM_C_M_08_C | M | |
| | ADM_C_M_09 | M | |
| | ADM_C_M_11 | M | |
| | ADM_S_M_01 | M | |
| | ADM_S_M_03 | M | |
| | ADM_S_M_07 | M | |
| | ADM_S_M_08 | M | |
| | ADM_S_M_06_C | M | |
| | S_M_05 | M | |
| | S_M_12 | M | |
| | S_M_13 | M | |
| | S_M_17 | M | |
| | D_M_01 | M | |
| SCWS-1.2-int-603 | ADM_C_M_01 | M | |
| | ADM_C_M_02 | M | |
| | ADM_C_M_03 | M | |
| | ADM_C_M_06 | M | |
| | ADM_C_M_08 | M | |
| | ADM_C_M_08_A | M | |
| | ADM_C_M_09 | M | |
| | ADM_C_M_11 | M | |
| | ADM_C_O_04 | O | |
| | ADM_S_M_01 | M | |
| | ADM_S_M_03 | M | |
| | ADM_S_M_08 | M | |
| | ADM_S_M_06_A | M | |
| | ADM_S_O_02 | O | |
| | S_M_05 | M | |
| | S_M_12 | M | |
| S_M_13 | M | | |
| S_M_17 | M | | |
| D_M_01 | M | | |
| SCWS-1.2-int-604 | ADM_C_M_01 | M | |
| | ADM_C_M_02 | M | |
| | ADM_C_M_03 | M | |
| | ADM_C_M_06 | M | |
| | ADM_C_M_08 | M | |
| | ADM_C_M_08_B | M | |
| | ADM_C_M_09 | M | |
| | ADM_C_M_11 | M | |
| | ADM_C_O_04 | O | |
| | ADM_S_M_01 | M | |

| Test Case Id | ETR Requirement Id | ETR Status | Notes |
|------------------|--------------------|------------|-------|
| | ADM_S_M_03 | M | |
| | ADM_S_M_08 | M | |
| | ADM_S_M_06_B | M | |
| | ADM_S_O_02 | O | |
| | S_M_05 | M | |
| | S_M_12 | M | |
| | S_M_13 | M | |
| | S_M_17 | M | |
| | D_M_01 | M | |
| SCWS-1.2-int-605 | ADM_C_M_01 | M | |
| | ADM_C_M_02 | M | |
| | ADM_C_M_03 | M | |
| | ADM_C_M_06 | M | |
| | ADM_C_M_08 | M | |
| | ADM_C_M_08_C | M | |
| | ADM_C_M_09 | M | |
| | ADM_C_M_11 | M | |
| | ADM_C_O_04 | O | |
| | ADM_S_M_01 | M | |
| | ADM_S_M_03 | M | |
| | ADM_S_M_08 | M | |
| | ADM_S_M_06_C | M | |
| | ADM_S_O_02 | O | |
| | S_M_05 | M | |
| | S_M_12 | M | |
| | S_M_13 | M | |
| | S_M_17 | M | |
| | D_M_01 | M | |
| | SCWS-1.2-int-606 | ADM_C_M_01 | M |
| ADM_C_M_02 | | M | |
| ADM_C_M_03 | | M | |
| ADM_C_M_06 | | M | |
| ADM_C_M_08 | | M | |
| ADM_C_M_08_A | | M | |
| ADM_C_M_09 | | M | |
| ADM_C_M_11 | | M | |
| ADM_C_O_05 | | O | |
| ADM_S_M_01 | | M | |
| ADM_S_M_03 | | M | |
| ADM_S_M_08 | | M | |
| ADM_S_M_06_A | | M | |
| ADM_S_O_03 | | O | |
| S_M_05 | | M | |
| S_M_12 | | M | |
| S_M_13 | | M | |

| Test Case Id | ETR Requirement Id | ETR Status | Notes |
|------------------|--------------------|------------|-------|
| | S_M_17 | M | |
| | D_M_01 | M | |
| SCWS-1.2-int-607 | ADM_C_M_01 | M | |
| | ADM_C_M_02 | M | |
| | ADM_C_M_03 | M | |
| | ADM_C_M_06 | M | |
| | ADM_C_M_08 | M | |
| | ADM_C_M_08_B | M | |
| | ADM_C_M_09 | M | |
| | ADM_C_M_11 | M | |
| | ADM_C_O_05 | O | |
| | ADM_S_M_01 | M | |
| | ADM_S_M_03 | M | |
| | ADM_S_M_08 | M | |
| | ADM_S_M_06_B | M | |
| | ADM_S_O_03 | O | |
| | S_M_05 | M | |
| | S_M_12 | M | |
| | S_M_13 | M | |
| | S_M_17 | M | |
| | D_M_01 | M | |
| | SCWS-1.2-int-608 | ADM_C_M_01 | M |
| ADM_C_M_02 | | M | |
| ADM_C_M_03 | | M | |
| ADM_C_M_06 | | M | |
| ADM_C_M_08 | | M | |
| ADM_C_M_08_C | | M | |
| ADM_C_M_09 | | M | |
| ADM_C_M_11 | | M | |
| ADM_C_O_05 | | O | |
| ADM_S_M_01 | | M | |
| ADM_S_M_03 | | M | |
| ADM_S_M_08 | | M | |
| ADM_S_M_06_C | | M | |
| ADM_S_O_03 | | O | |
| S_M_05 | | M | |
| S_M_12 | | M | |
| S_M_13 | | M | |
| S_M_17 | | M | |
| D_M_01 | | M | |
| SCWS-1.2-int-609 | | ADM_C_M_01 | M |
| | ADM_C_M_02 | M | |
| | ADM_C_M_03 | M | |
| | ADM_C_M_06 | M | |
| | ADM_C_M_08 | M | |

| Test Case Id | ETR Requirement Id | ETR Status | Notes |
|------------------|--------------------|------------|-------|
| | ADM_C_M_09 | M | |
| | ADM_C_M_11 | M | |
| | ADM_C_O_05 | O | |
| | ADM_C_O_06 | O | |
| | ADM_S_M_01 | M | |
| | ADM_S_M_03 | M | |
| | ADM_S_M_08 | M | |
| | ADM_S_O_03 | O | |
| | ADM_S_O_04 | O | |
| | S_M_05 | M | |
| | S_M_12 | M | |
| | S_M_13 | M | |
| | S_M_17 | M | |
| | D_M_01 | M | |
| SCWS-1.2-int-610 | ADM_C_M_01 | M | |
| | ADM_C_M_02 | M | |
| | ADM_C_M_03 | M | |
| | ADM_C_M_06 | M | |
| | ADM_C_M_08 | M | |
| | ADM_C_M_09 | M | |
| | ADM_C_M_11 | M | |
| | ADM_C_O_04 | O | |
| | ADM_C_O_07 | O | |
| | ADM_S_M_01 | M | |
| | ADM_S_M_03 | M | |
| | ADM_S_M_08 | M | |
| | ADM_S_O_02 | O | |
| | ADM_S_O_05 | O | |
| | S_M_05 | M | |
| | S_M_12 | M | |
| | S_M_13 | M | |
| | S_M_17 | M | |
| D_M_01 | M | | |
| SCWS-1.2-int-701 | ADM_S_M_04 | M | |
| | S_M_14 | M | |
| | S_M_16 | M | |
| | S_M_18 | M | |
| SCWS-1.2-int-800 | ADM_C_M_01 | M | |
| | ADM_C_M_02 | M | |
| | ADM_C_M_03 | M | |
| | ADM_C_M_06 | M | |
| | ADM_C_M_07 | M | |
| | ADM_C_M_08 | M | |
| | ADM_C_M_11 | M | |
| | ADM_C_M_12 | M | |

| Test Case Id | ETR Requirement Id | ETR Status | Notes |
|------------------|--------------------|------------|-------|
| | ADM_S_M_01 | M | |
| | ADM_S_M_03 | M | |
| | ADM_S_M_07 | M | |
| | ADM_S_M_08 | M | |
| | S_M_05 | M | |
| | S_M_12 | M | |
| | S_M_13 | M | |
| | S_M_17 | M | |
| | D_M_01 | M | |
| | D_M_03 | M | |
| SCWS-1.2-int-801 | ADM_C_M_01 | M | |
| | ADM_C_M_02 | M | |
| | ADM_C_M_03 | M | |
| | ADM_C_M_06 | M | |
| | ADM_C_M_07 | M | |
| | ADM_C_M_08 | M | |
| | ADM_C_M_11 | M | |
| | ADM_C_M_13 | M | |
| | ADM_S_M_01 | M | |
| | ADM_S_M_03 | M | |
| | ADM_S_M_07 | M | |
| | ADM_S_M_08 | M | |
| | S_M_05 | M | |
| | S_M_12 | M | |
| | S_M_13 | M | |
| | S_M_17 | M | |
| | D_M_01 | M | |
| D_M_05 | M | | |
| SCWS-1.2-int-900 | ADM_C_M_01 | M | |
| | ADM_C_M_02 | M | |
| | ADM_C_M_03 | M | |
| | ADM_C_M_06 | M | |
| | ADM_C_M_07 | M | |
| | ADM_C_M_08 | M | |
| | ADM_C_M_11 | M | |
| | ADM_S_M_01 | M | |
| | ADM_S_M_03 | M | |
| | ADM_S_M_07 | M | |
| | ADM_S_M_08 | M | |
| | S_M_05 | M | |
| | S_M_12 | M | |
| | S_M_13 | M | |
| | S_M_17 | M | |
| | D_M_01 | M | |
| | BACK-002 | M | |

| Test Case Id | ETR Requirement Id | ETR Status | Notes |
|-------------------|--------------------|------------|-------|
| SCWS-1.2-int-901 | ADM_C_M_01 | M | |
| | ADM_C_M_02 | M | |
| | ADM_C_M_03 | M | |
| | ADM_C_M_06 | M | |
| | ADM_C_M_07 | M | |
| | ADM_C_M_08 | M | |
| | ADM_C_M_11 | M | |
| | ADM_S_M_01 | M | |
| | ADM_S_M_03 | M | |
| | ADM_S_M_07 | M | |
| | ADM_S_M_08 | M | |
| | S_M_05 | M | |
| | S_M_12 | M | |
| | S_M_13 | M | |
| | S_M_17 | M | |
| | D_M_01 | M | |
| | BACK-001 | M | |
| SCWS-1.2-int-1000 | ADM_C_M_01 | M | |
| | ADM_C_M_02 | M | |
| | ADM_C_M_03 | M | |
| | ADM_C_M_06 | M | |
| | ADM_C_M_07 | M | |
| | ADM_C_M_08 | M | |
| | ADM_C_M_10 | M | |
| | ADM_C_M_11 | M | |
| | ADM_S_M_01 | M | |
| | ADM_S_M_02 | M | |
| | ADM_S_M_03 | M | |
| | S_M_05 | M | |
| | S_M_12 | M | |
| | S_M_13 | M | |
| | S_M_17 | M | |
| D_M_01 | M | | |
| SCWS-1.2-int-1001 | ADM_C_M_01 | M | |
| | ADM_C_M_02 | M | |
| | ADM_C_M_03 | M | |
| | ADM_C_M_06 | M | |
| | ADM_C_M_07 | M | |
| | ADM_C_M_08 | M | |
| | ADM_C_M_11 | M | |
| | ADM_C_O_03 | O | |
| | ADM_S_M_01 | M | |
| | ADM_S_M_03 | M | |
| | ADM_S_O_06 | O | |
| | S_M_05 | M | |

| Test Case Id | ETR Requirement Id | ETR Status | Notes |
|---|--------------------|------------|-------|
| | S_M_12 | M | |
| | S_M_13 | M | |
| | S_M_17 | M | |
| | D_M_01 | M | |
| SCWS-1.2-int-1002 | ADM_C_M_01 | M | |
| | ADM_C_M_02 | M | |
| | ADM_C_M_03 | M | |
| | ADM_C_M_06 | M | |
| | ADM_C_M_07 | M | |
| | ADM_C_M_08 | M | |
| | ADM_C_M_11 | M | |
| | ADM_C_O_01 | O | |
| | ADM_S_M_01 | M | |
| | ADM_S_M_03 | M | |
| | S_M_05 | M | |
| | S_M_12 | M | |
| | S_M_13 | M | |
| | S_M_17 | M | |
| D_M_01 | M | | |
| SCWS-1.2-int-1100, SCWS-1.2-int-1101, SCWS-1.2-int-1102 | C_M_01 | M | |
| | S_M_01 | M | |
| | S_M_03 | M | |
| | S_M_05 | M | |
| | S_O_03 | O | |
| | D_M_01 | M | |
| | D_M_06 | M | |
| | D_M_07 | M | |
| D_O_01 | O | | |

Table 3: Enabler Validation Test Cases

7.2 Non-Covered ETR Requirements

Any restrictions, limitations and/or infeasibility of testing of the ETR requirements should be stated in this section.

If new information about limitations and/or infeasibility of testing of any of the ETR requirements is discovered, this section should be updated accordingly.

| ETR Requirement Id | ETR Status | Notes |
|--------------------|------------|---|
| S_M_15 | M | Administration commands: GET HTTP request |
| S_M_26 | M | Administration commands: HEAD HTTP request |
| S_M_98 | M | Error flow on admin: Error strings are returned correctly by SCWS |
| S_M_99 | M | Error flow on admin : HTTP response status code “403” for non-executed admin commands is returned by the SCWS |
| S_O_01 | O | Support for HTTP Digest authentication by SCWS for browsing |

| ETR Requirement Id | ETR Status | Notes |
|--------------------|------------|--|
| S_O_02 | O | Support for server public key pair and certificate over TLS |
| S_O_04 | O | UICC File access with URI |
| S_O_05 | O | Content audit |
| S_O_06 | O | User self-care administration |
| S_O_07 | O | Support of HTTPS with PK TLS by SCWS for browsing |
| S_O_08 | O | Support of HTTPS with PSK-TLS by SCWS for browsing |
| S_O_09 | O | Fragment Negotiation in TLS by SCWS for browsing |
| S_O_11 | O | Error flow on the optional features |
| ADM_C_M_99 | M | Error flow: admin client not able to store the triggering message sent through a secure SMS |
| ADM_C_O_02 | O | Trigger several administration sessions. |
| ADM_C_O_08 | O | Error flow: admin client not able to store the triggering message sent through an OMA SIP Push |
| ADM_S_O_01 | O | Support of TLS extensions Maximum Fragment Length Negotiation by the remote admin server |
| C_O_01 | O | TLS 1.2 protocol managed by the SCWS Client (e.g. browser) |
| C_O_02 | O | PSK-TLS protocol managed by the SCWS Client (e.g. browser) |
| C_O_04 | O | Support for HTTP Digest authentication by the SCWS Client (e.g. browser) |

Table 4: Non-Covered ETR Requirements

Appendix A. Change History (Informative)

A.1 Approved Version History

| Reference | Date | Description |
|-----------|------|------------------|
| n/a | n/a | No prior version |

A.2 Draft/Candidate Version 1.2 History

| Document Identifier | Date | Sections | Description |
|---|-------------|--|---|
| Draft Versions OMA-EVP-Smartcard-Web-Server-V1_2 | 31 Mar 2011 | All | Initial version, based on OMA-EVP-Smartcard_Web_Server-V1_1-20090512-A. and 2011 EVP Template |
| | 16 Jun 2011 | 2.1, 3.2,3.3, 5.1.1, 5.1.2, 7 | The following CRs are incorporated: OMA-IOP-BRO-2011-0031-CR_SCWS12_EVP_Editorials OMA-IOP-BRO-2011-0032-CR_SCWS12_EVP_Updates |
| | 18 Aug 2011 | Tables 1, 2, 3 and 4 Section 2.1 | The following CRs are incorporated: OMA-IOP-BRO-2011-0063R01- CR_SCWS12__EVP_Update_TestCases_Lists OMA-IOP-BRO-2011-0064R01-CR_SCWS12_EVP_ETR_Lists OMA-IOP-BRO-2011-0065-CR_SCWS12_EVP_ProvSC |
| Candidate Versions OMA-EVP-Smartcard-Web-Server-V1_2 | 11 Oct 2011 | n/a | Status changed to Candidate by TP TP Ref# OMA-TP-2011-0341- INP_SCWS_1_2_EVP_for_Candidate_Approval |